

Agua Dulce Airpark: Gateway To Airports In The L.A. Basin

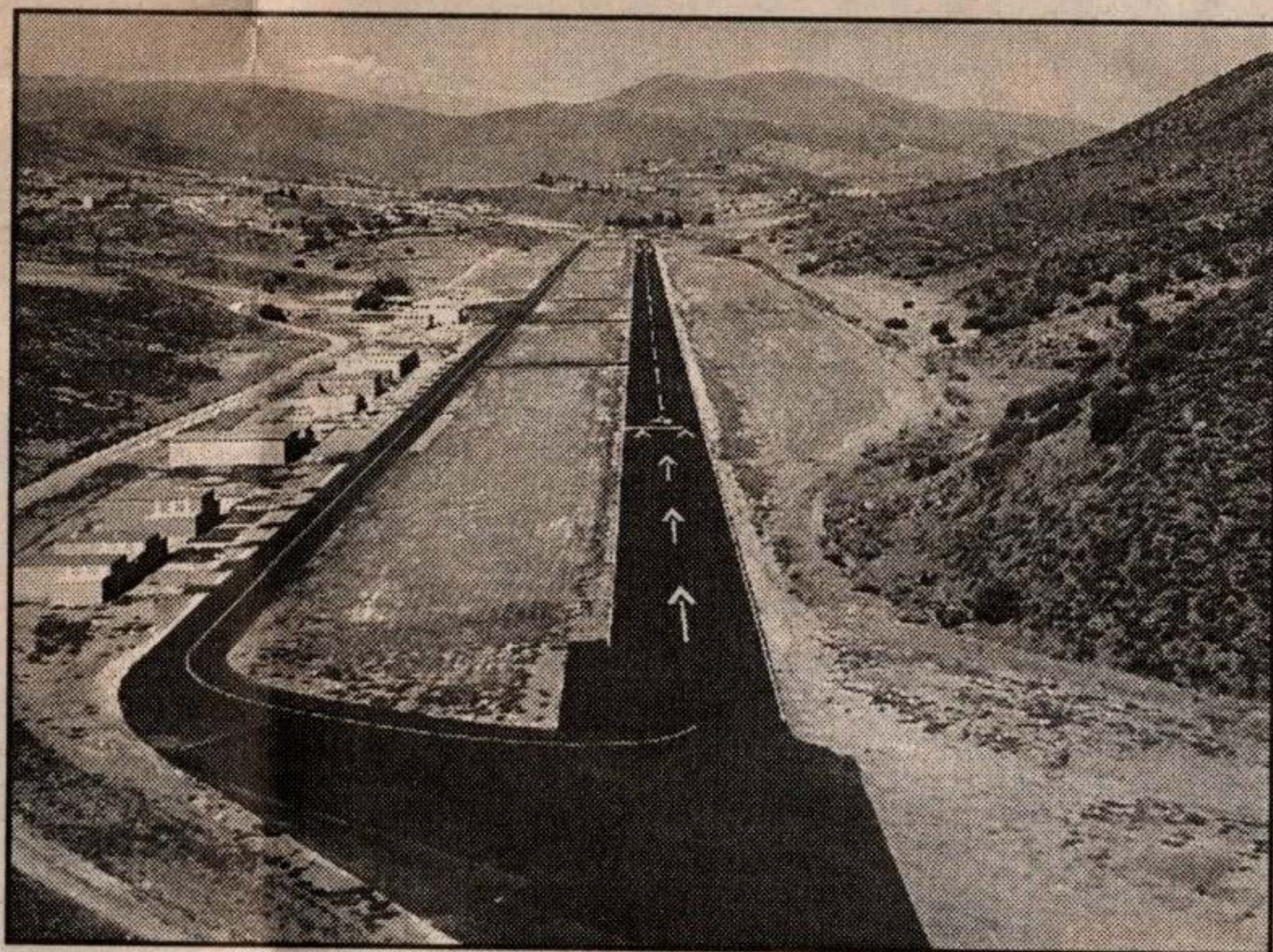
Located in the Sierra Pelona Valley of northern Los Angeles County, Agua Dulce Airpark is a popular rest stop for pilots on their way to and from airports in the hectic L.A. Basin.

Thousands of pilots have stopped there since the 400-acre airport was founded in the 1950s. Whether it was for a pit stop, a refueling stop, a cup of coffee or a bite to eat, Agua Dulce has always been known for its friendly atmosphere.

Like most airports, there were good times and bad; for a while, things got so bad that pilots thought the field was closed. But in late 2000, aviation advocate and pilot Barry Kirshner took a chance and began restoring the airpark back to a semblance of its glory days.

Kirshner has made a lot of improvements, including a new fuel system with both 100LL avgas and Jet A, a repaved runway, a renovated pilot's lounge with big-screen TV and billiards, and a sod infield for helicopter landings.

Kirshner is putting out the word to aircraft owners that



VIEW OF Agua Dulce Airpark from approach end of Rwy. 04.

this year, pilots and airport-area residents will also have access to a 75x50-foot swimming pool, two sand-volleyball courts, four soccer fields and the new L70 Café and Lounge, he added.

During the week, visitors can eat at the cafe and order off the menu, which includes Starbucks coffee. On weekends, said Kirshner, their outdoor barbecue serves up tri-tip sandwiches, chicken burgers, cheeseburgers and other BBQ favorites for fly-in visitors.

rock formations in the country, is just a stone's throw from the airport. A popular location for TV and movie shoots, the park is also a popular tourist stop.

With all his efforts, Kirshner is hoping to build the foundation for a new flying community. He hopes that a new generation of pilots will come to appreciate Agua Dulce, just as pilots did decades ago.

For more information about Agua Dulce Airpark, call (661) 268-8835 or visit