

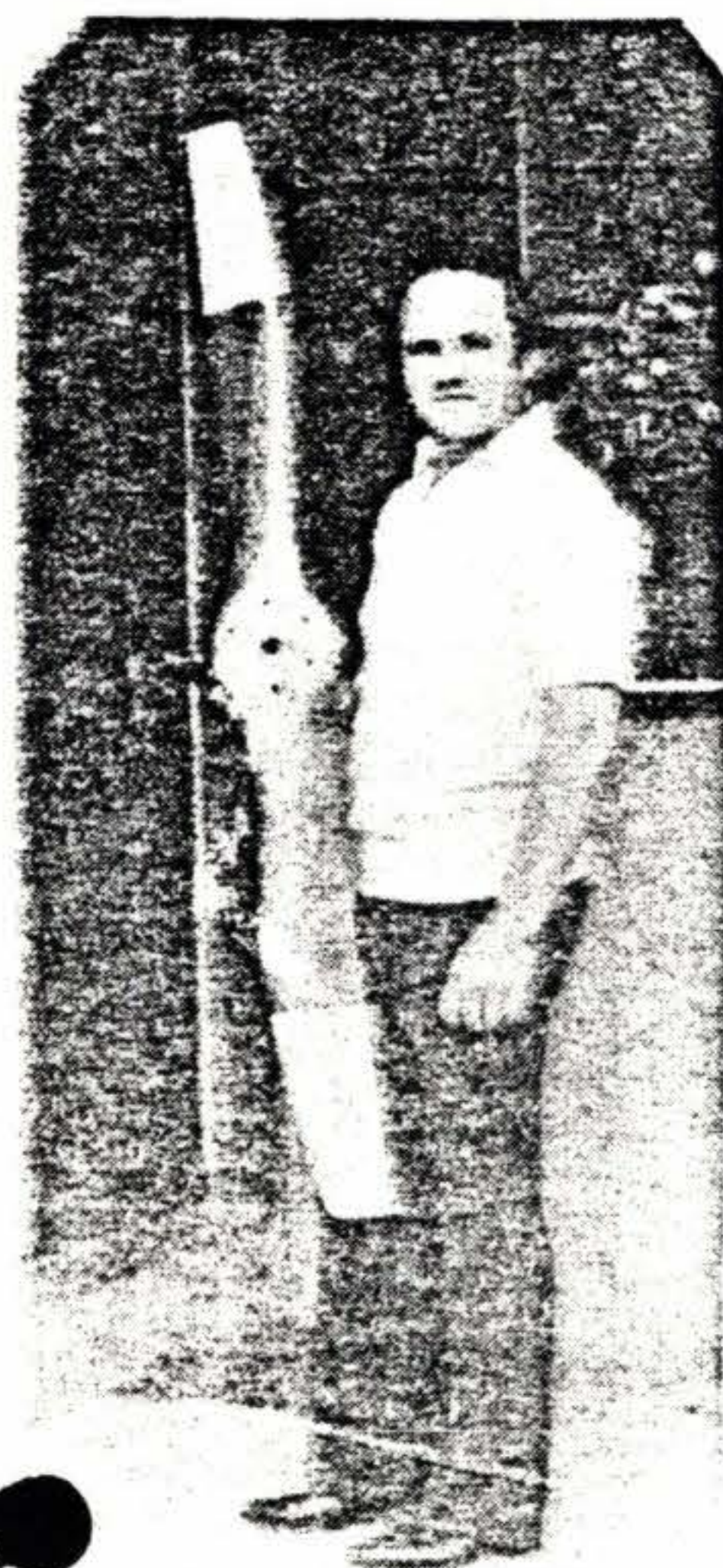


QUALITY PROPELLERS

#41B
#225

Phone (419) 877-5557

P.O. Box 147 - Waterville, Ohio - 43566



Prince Aircraft Company was formed several years ago around the idea of manufacturing high quality wood propellers of award-winning beauty that are very lightweight with the durability to withstand the effects of rain, snow, and stone damage and still be affordable to the average aircraft builder.

Performance has well exceeded even the company's expectations with users claiming up to a twelve mph increase in airspeed with the Semi-Simitar propeller and up to twenty-three mph increase in airspeed with our new inclusive P-Tip design. Of the numerous propellers in use, we continually receive compliments of the exceptional beauty, durability and superb performance gained.

We offer numerous options and services, thus allowing the customer to purchase the highest quality, top performing propeller on the market today at a cost one can afford.

Due to our stringent quality control and professional craftsmen, we firmly believe our propellers are the best performing and eye appealing available, proven by our many satisfied customers.

Happy Flying,

Lonnie Prince
President

We offer two material lines in all prop planforms. Birch and Honduras Mahogany. Birch is the strongest wood prop available and is recommended for high disc loading applications such as extreme aerobatic maneuvers or high rpm operations used in formula racing aircraft.

Honduras Mahogany is one of the oldest woods used in propeller manufacturing due to its ultimate resistance to warping and its ability to retain a constant moisture content. This wood is superior in elasticity for propellers such as the Semi-Simitar and Prince P-Tip where blade twisting is essential for maximum efficiency. The light weight of this wood allows additional payload, reduces the gyroscopic forces and absorbs engine power pulses that are normally transmitted to the aircraft, thus reducing fatigue on the occupants, as well as airframe. Should this propeller strike a non-movable object, the propeller will shear, avoiding expensive internal engine components.

Birch and Mahogany is hand selected by trained personnel with years of experience in selecting airworthy material. Then, each piece is surfaced on our special micron sanding machine, which allows a precise fit between laminations to ensure trouble-free propeller operations for years to come.

Our adhesive is specifically made for us by a leading manufacturer with years of application in the aircraft and propeller field, providing a tremendous history of reliable service.

The propeller is then precisely hand crafted by professional craftsmen to rigid specifications with a planform and airfoil found to be the most efficient through strenuous testing for your particular application.

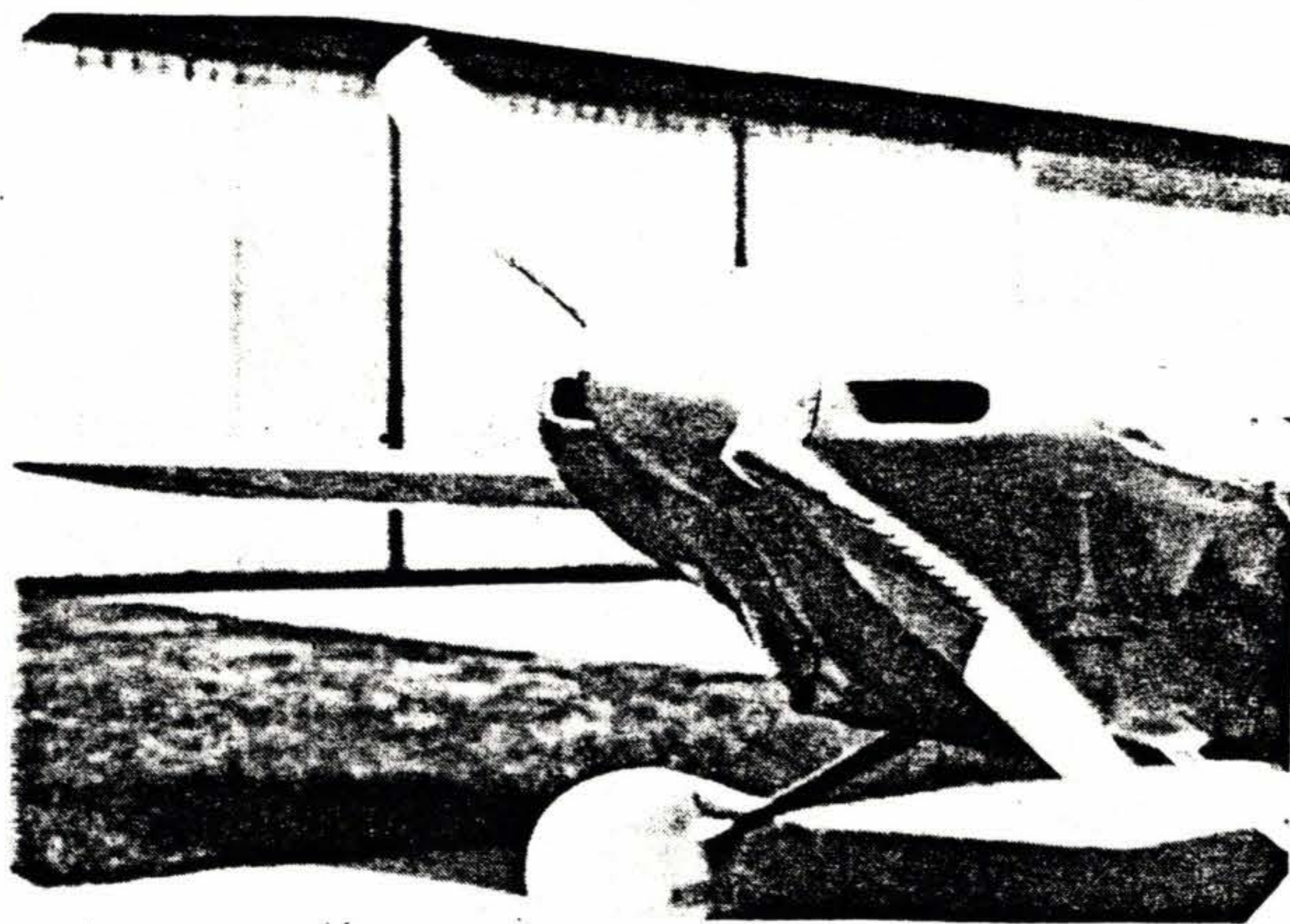
A two-part stainless steel leading edge protector is shaped directly into the airfoil to provide a smooth boundary layer eliminating the turbulence problem common with overlapped metal or tape protectors.

Fiberglass cloth and resin is applied to the entire blade area, front and back sides to give the wood core the maximum protection available and will eliminate the common tip splitting problem found on unprotected propellers.

Balance is accomplished on a precision dual-track, full rotational balancer, which gives perfect balance in all axis of rotation. Our propellers, due to time consuming efforts, operate as smoothly as multi-blade propellers.

Six coats of a specially formulated polyurethane plastic is applied, then hand rubbed between each coat to give the mirror finish which has given us the well known reputation of building the most beautiful propellers available. In addition, we add a clear ultra-violet protector in the plastic to help eliminate the damaging ultra-violet sun rays, then the tips are painted white for maximum visibility that will match any aircraft decor.

— PRINCE P-TIP —



This propeller is the ultimate of design in the new generation propellers from Prince Aircraft Company. The beauty and pleasing lines only add to the performance gained from using this design. The past years invested perfecting the tip shape and angles, as well as the combined airfoils, has awarded us the most efficient propeller available today.

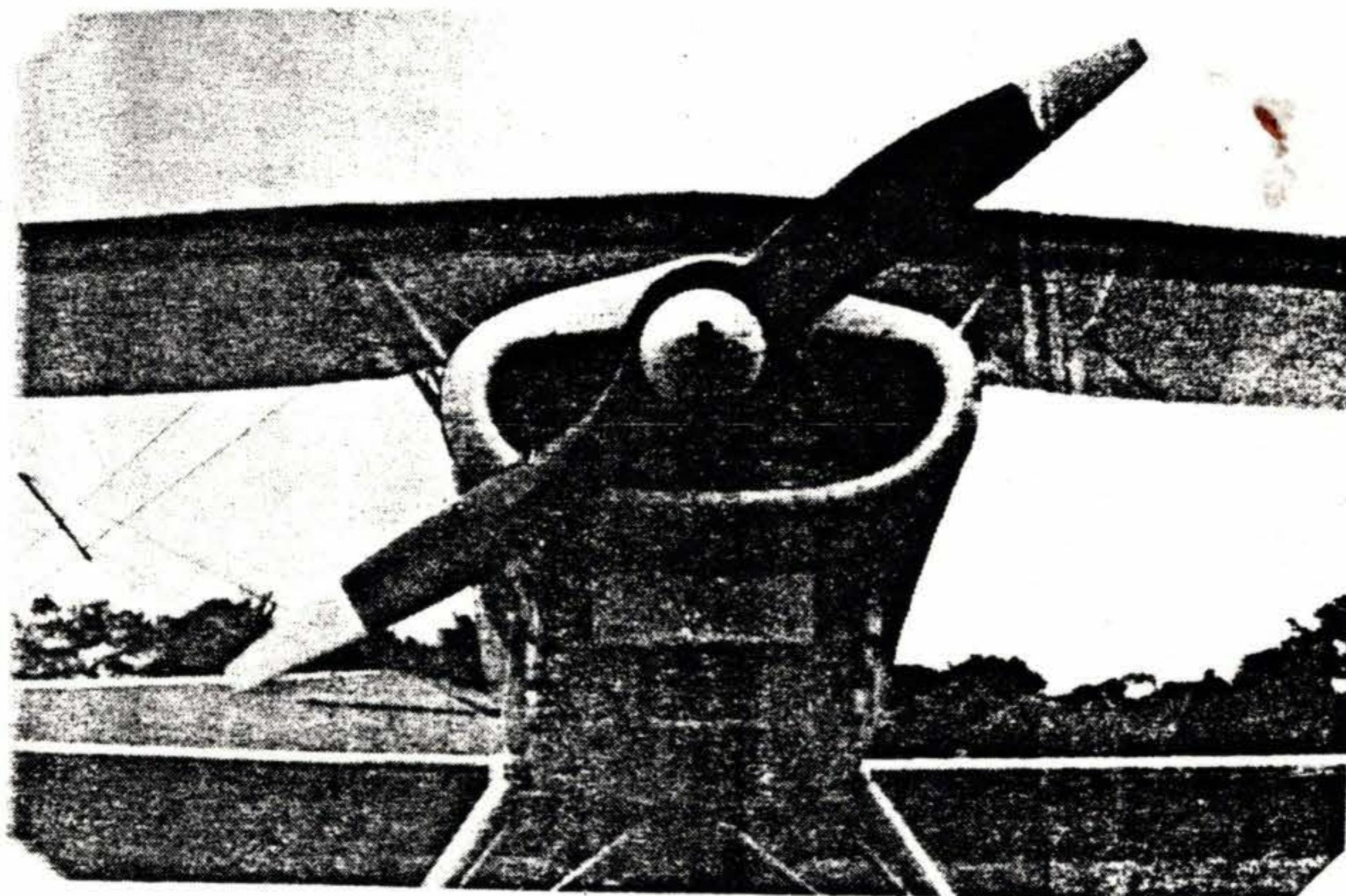
Jack Saum, Toledo, Ohio, selected the P-TIP over one manufactured by a well known certified propeller company and gained 23 mph that aided him in placing second in the "OshKosh 500" race in 1982. (A metal constant speed placed first.)

Ultralight pilots report up to a 12 mph increase in airspeed and can now cruise at reduced power settings. Every type of aircraft the P-TIP has been flown on has resulted in an increase of performance.

Another benefit by using the P-TIP is the significant decrease in the loud cracking sound common with standard propellers. Pilots using turbocharging systems inform us they experience no propeller noise in the cockpit while flying the P-TIP; ultralight pilots say they no longer need earplugs, due to the comfortable noise level from the P-TIP. The noise level, as well as vibration-free operation, is a direct result of the anhedral profile and P-TIP combination that tends to aid in eliminating air spillage over the tip and reducing propeller tip vortices, allowing smooth air for the next blade to operate in.

If you want reliability, beauty, high performance, and state-of-the-art design, choose the Prince P-TIP, the new generation propeller.

SEMI - SIMITAR

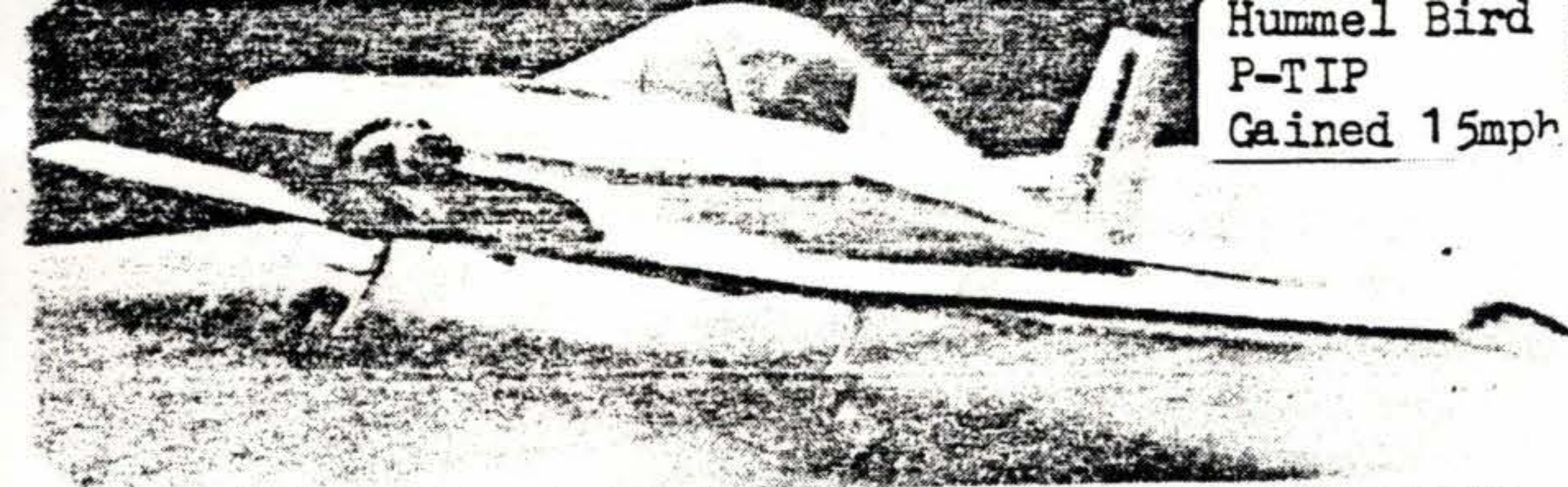


This propeller uses a special airfoil developed by Prince Aircraft engineers to provide high performance. The blade planform, similar to the P-TIP, was designed to allow blade twisting during different engine power settings; during takeoff the blades twist to decrease pitch, which is ideal for improving climb and takeoff distances; in cruise configuration, the blades unload to provide an increase in pitch which provides a maximum top speed cruise for your particular aircraft/power plant combination.

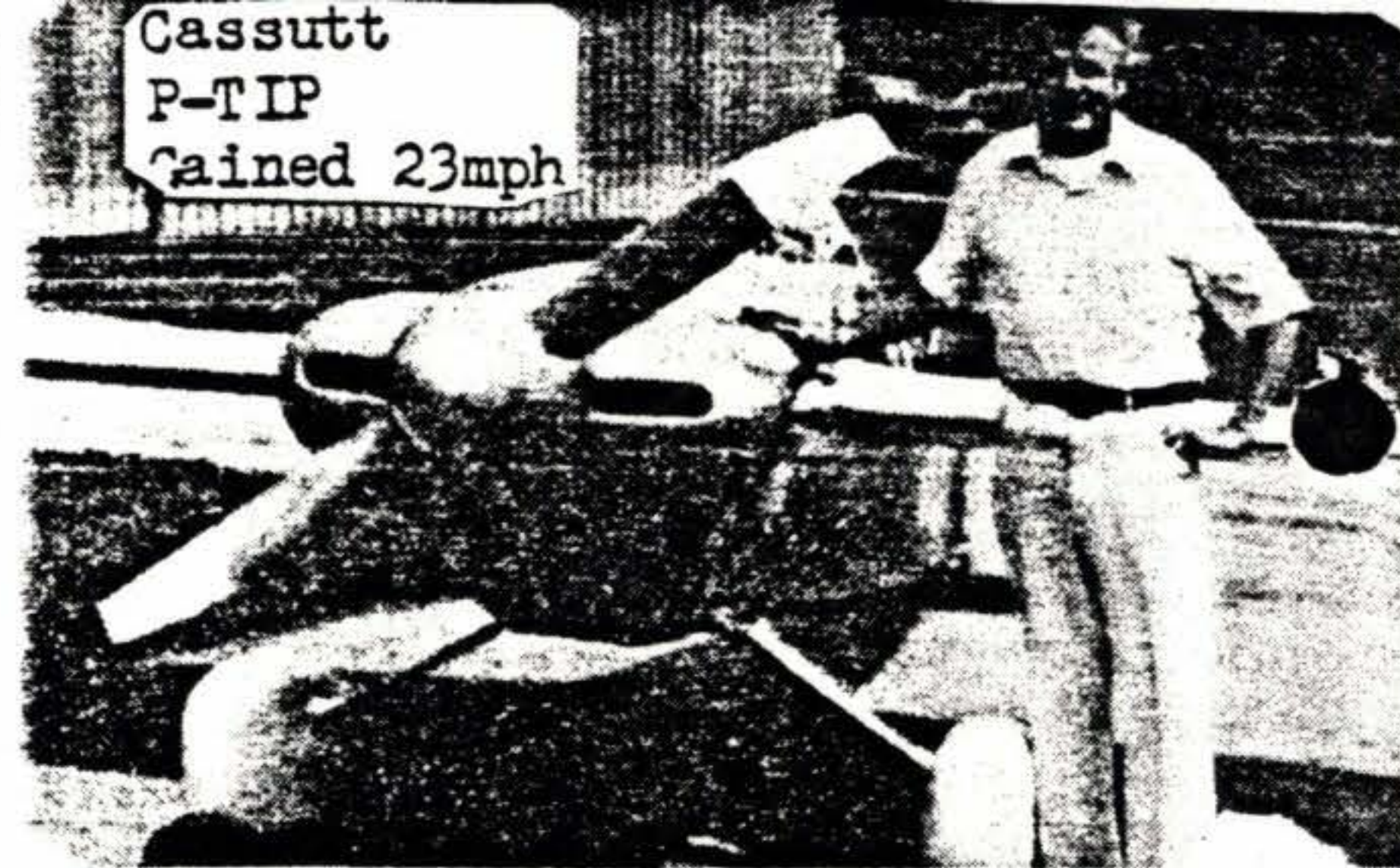
PARTIALLY FINISHED



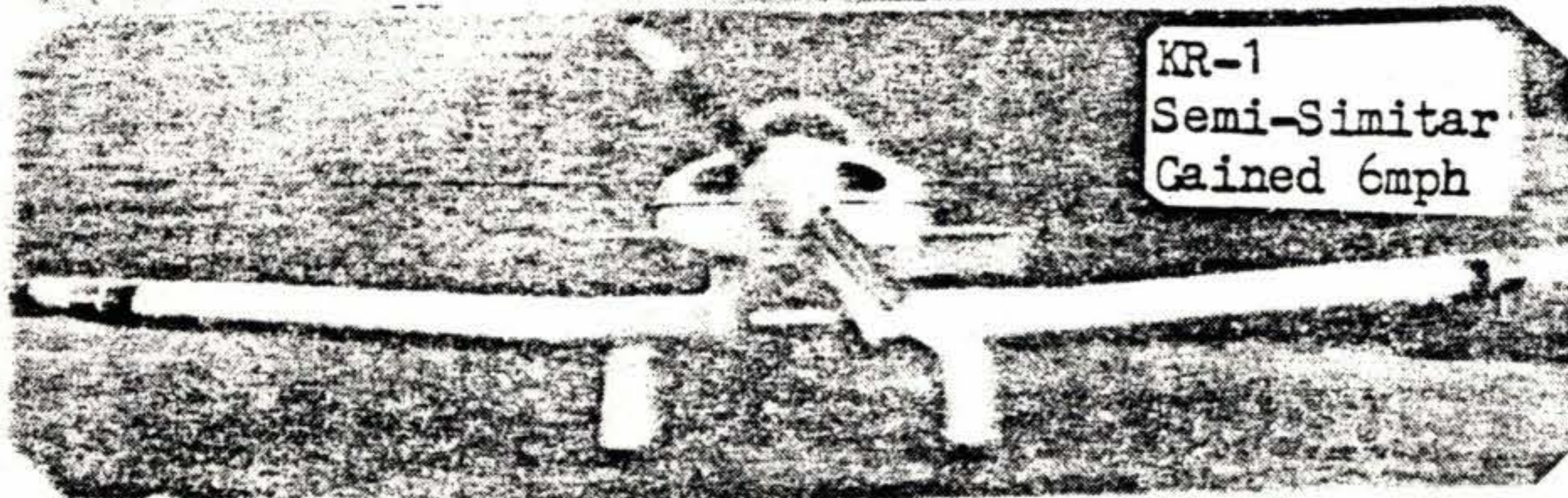
Save 15% by finishing your own propeller. All propellers are carved to shape, hub drilled to your specifications and perfectly balanced. To complete requires final sanding and finish applied. Very little work is required, however, a substantial savings is gained. (Semi-Simitar only)



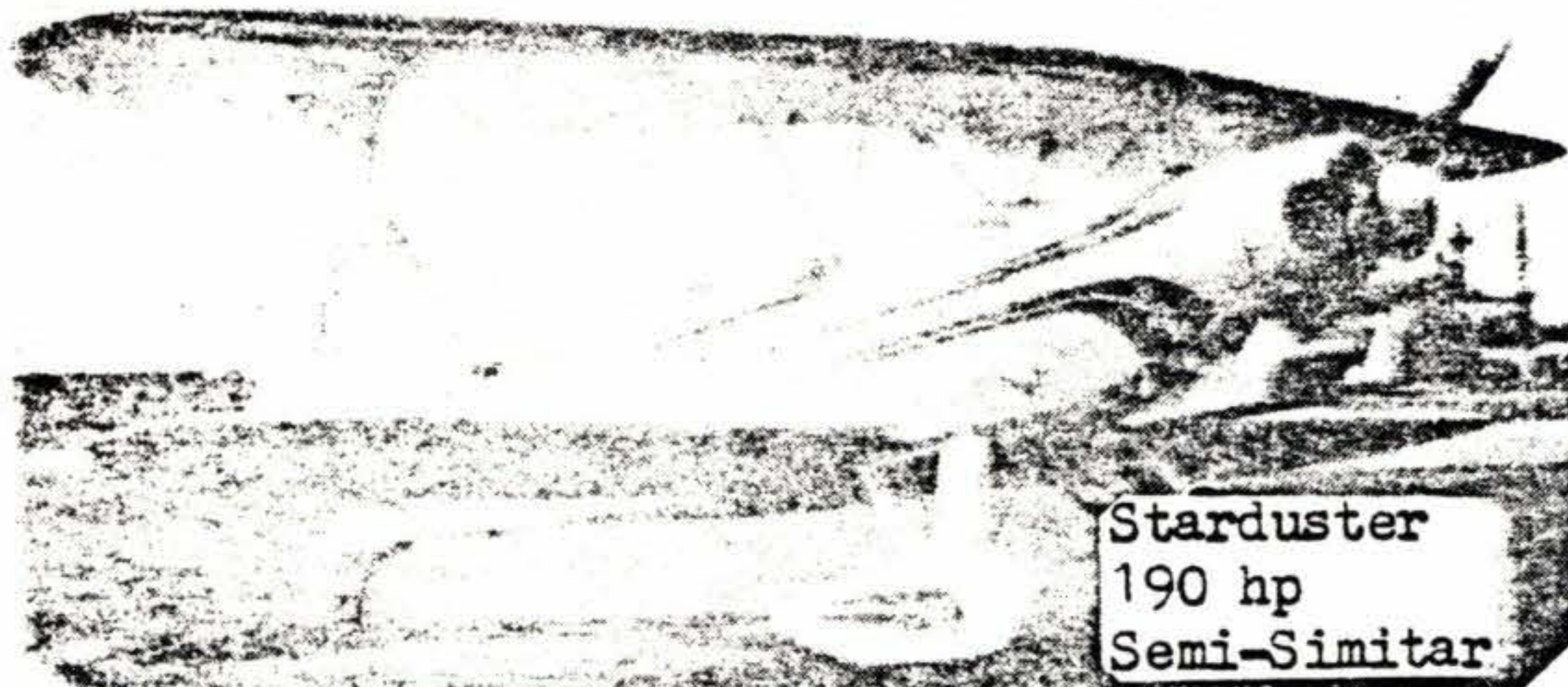
Hummel Bird
P-TIP
Gained 15mph



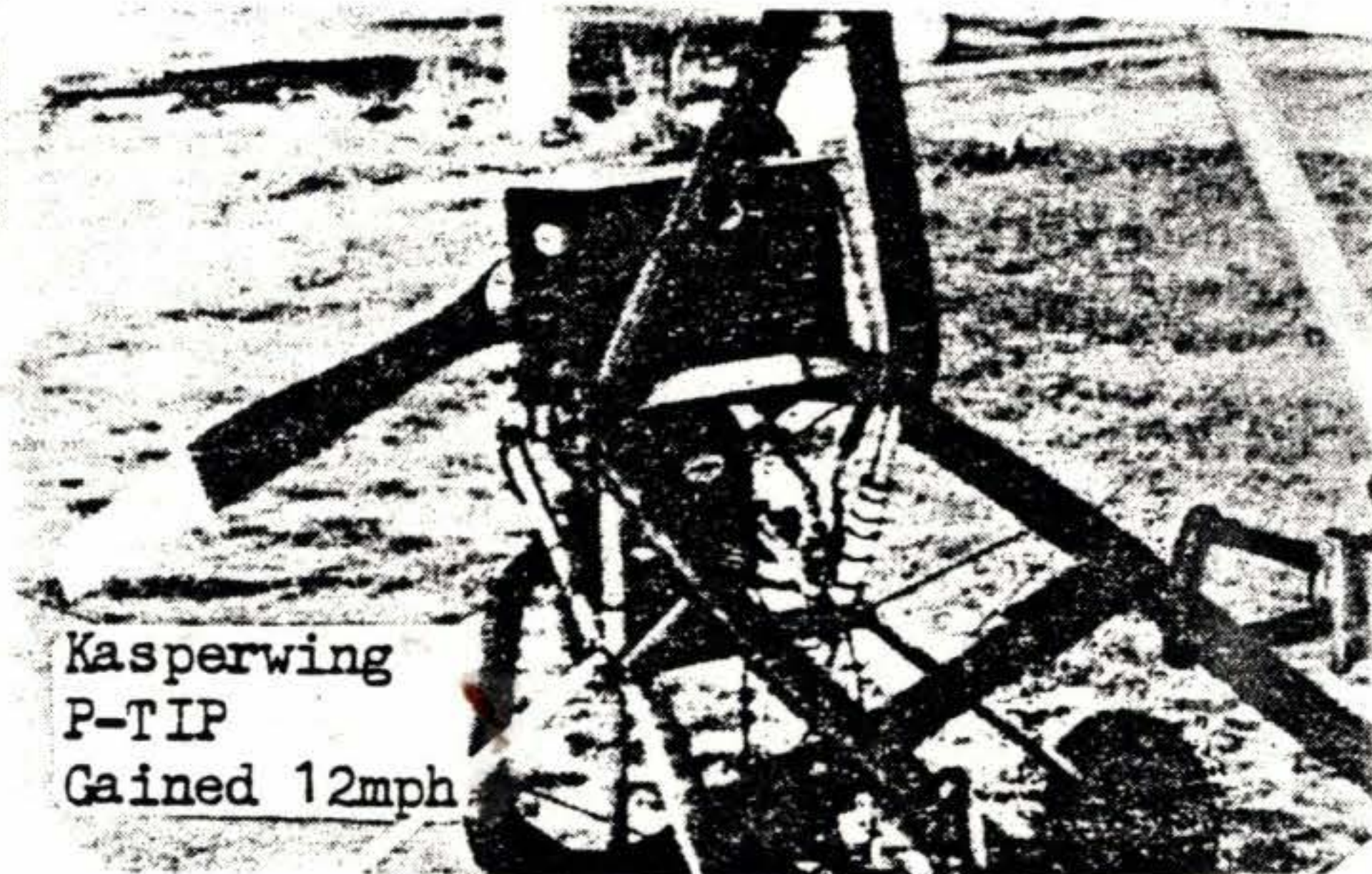
Cassutt
P-TIP
Gained 23mph



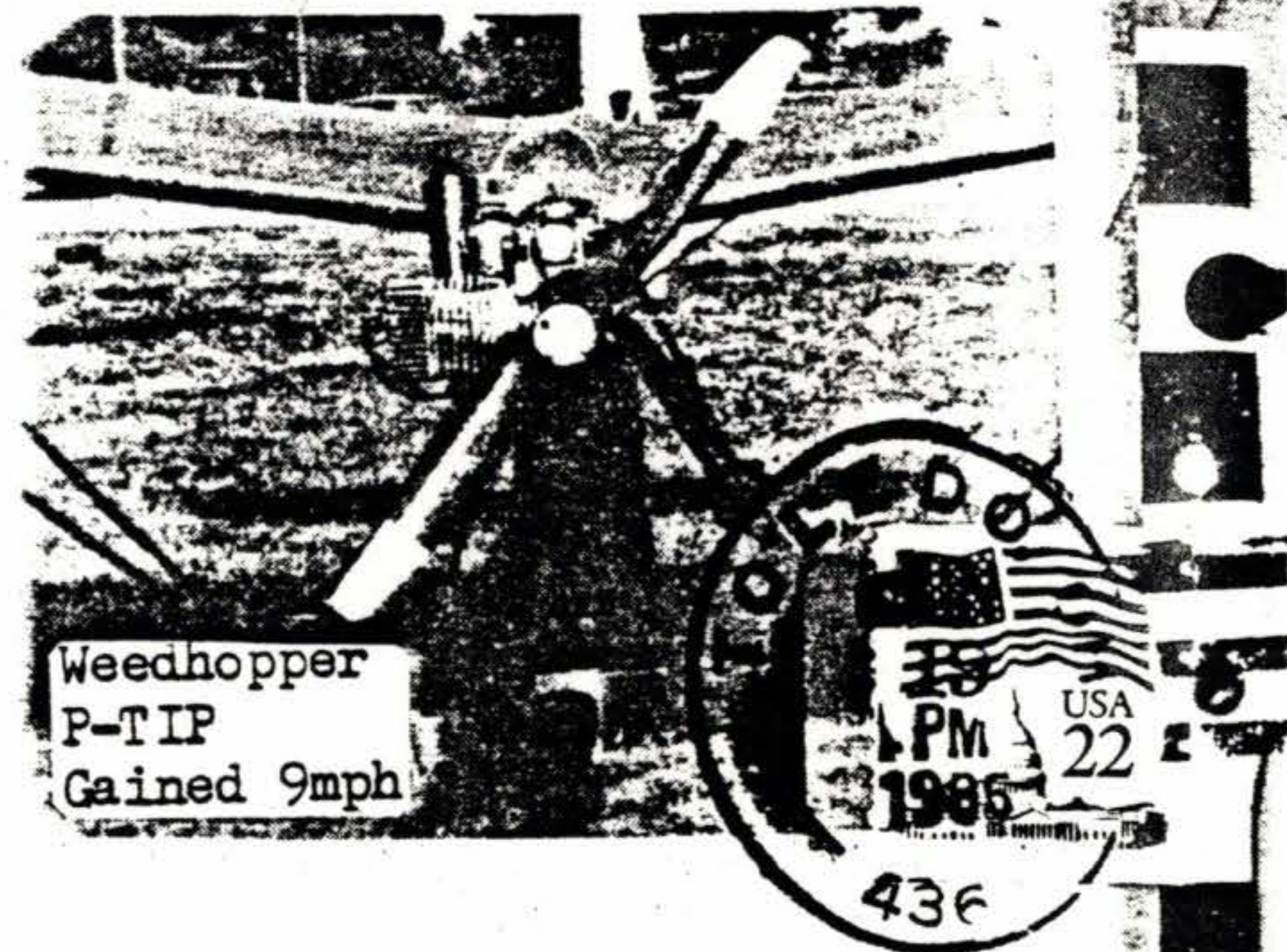
KR-1
Semi-Similar
Gained 6mph



Starduster
190 hp
Semi-Similar



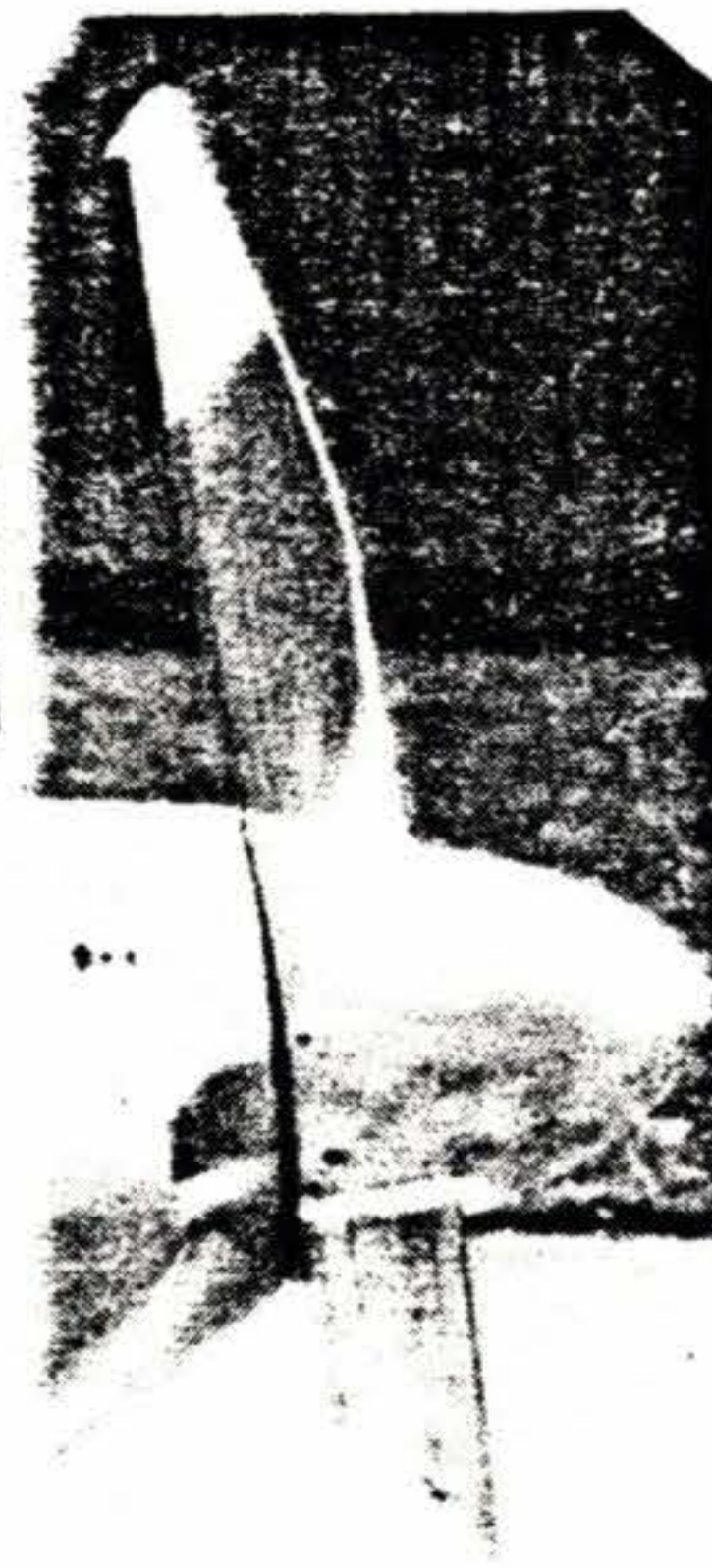
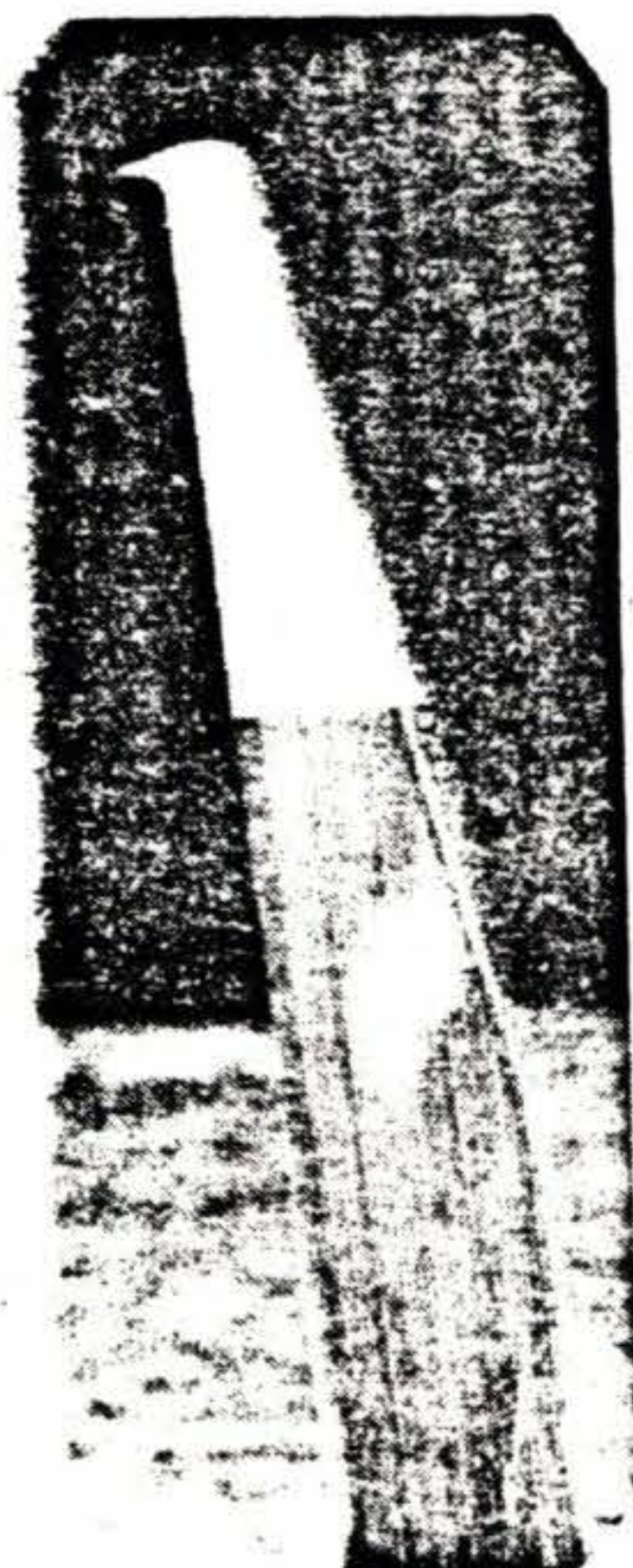
Kasperwing
P-TIP
Gained 12mph



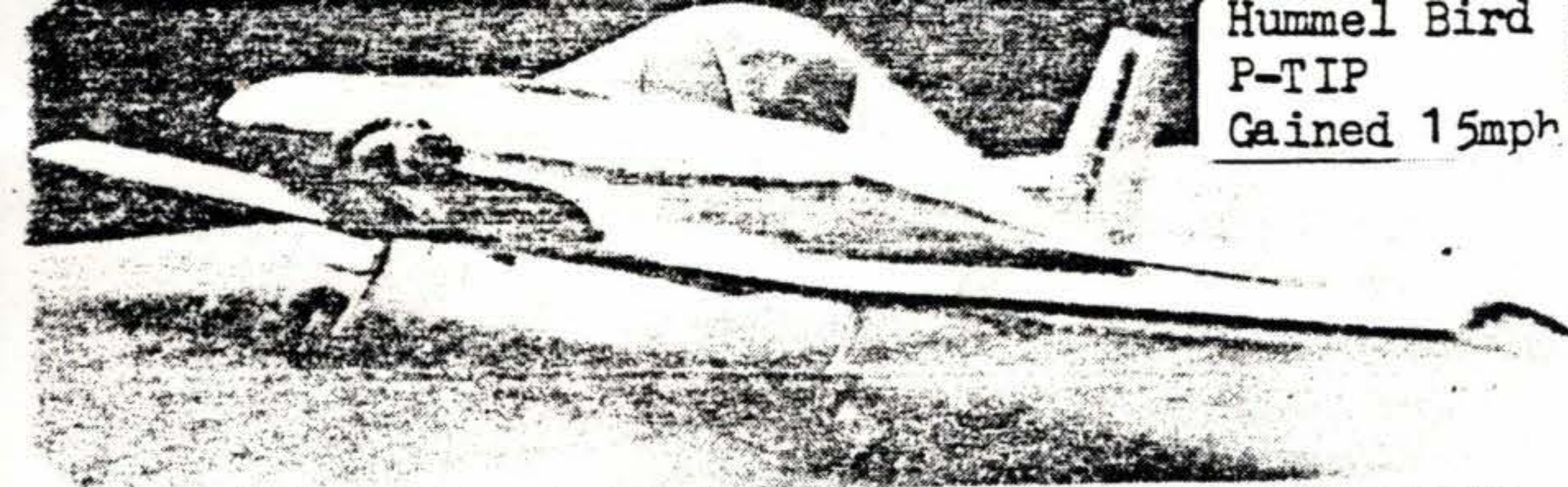
Weedhopper
P-TIP
Gained 9mph

PAC PRINCE AIRCRAFT COMPANY
QUALITY PROPELLERS

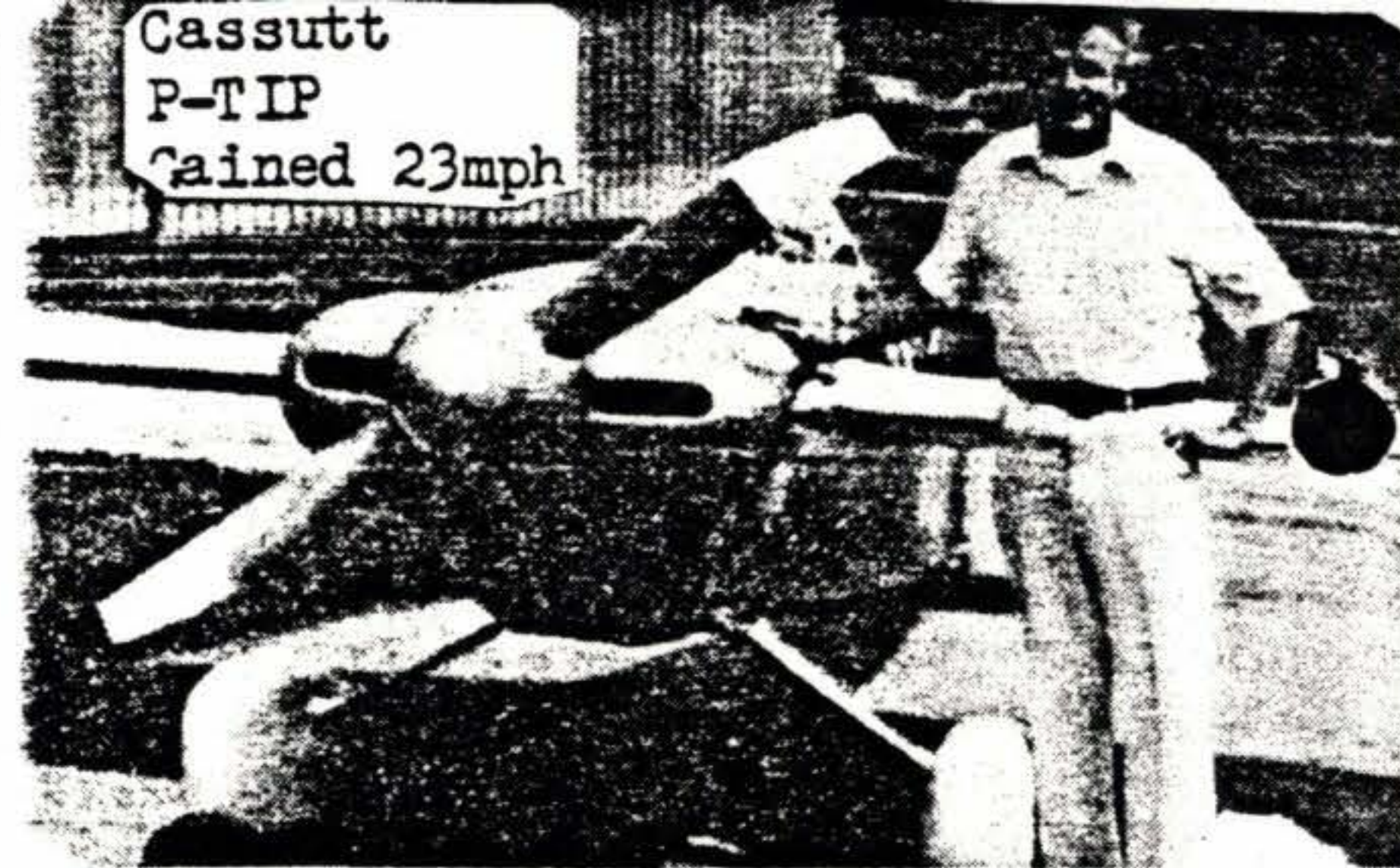
P.O. Box 147 - Waterville, Ohio - 43566



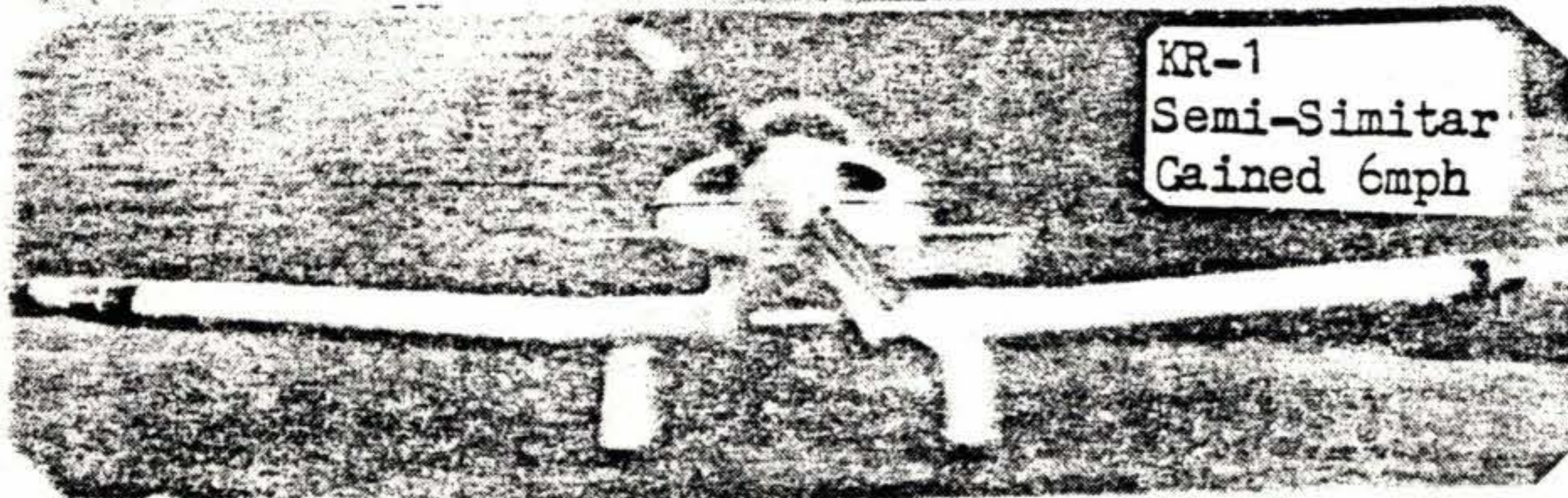
DAVID ORR
2523 S. BRUNDY
L.A., CA.
90064



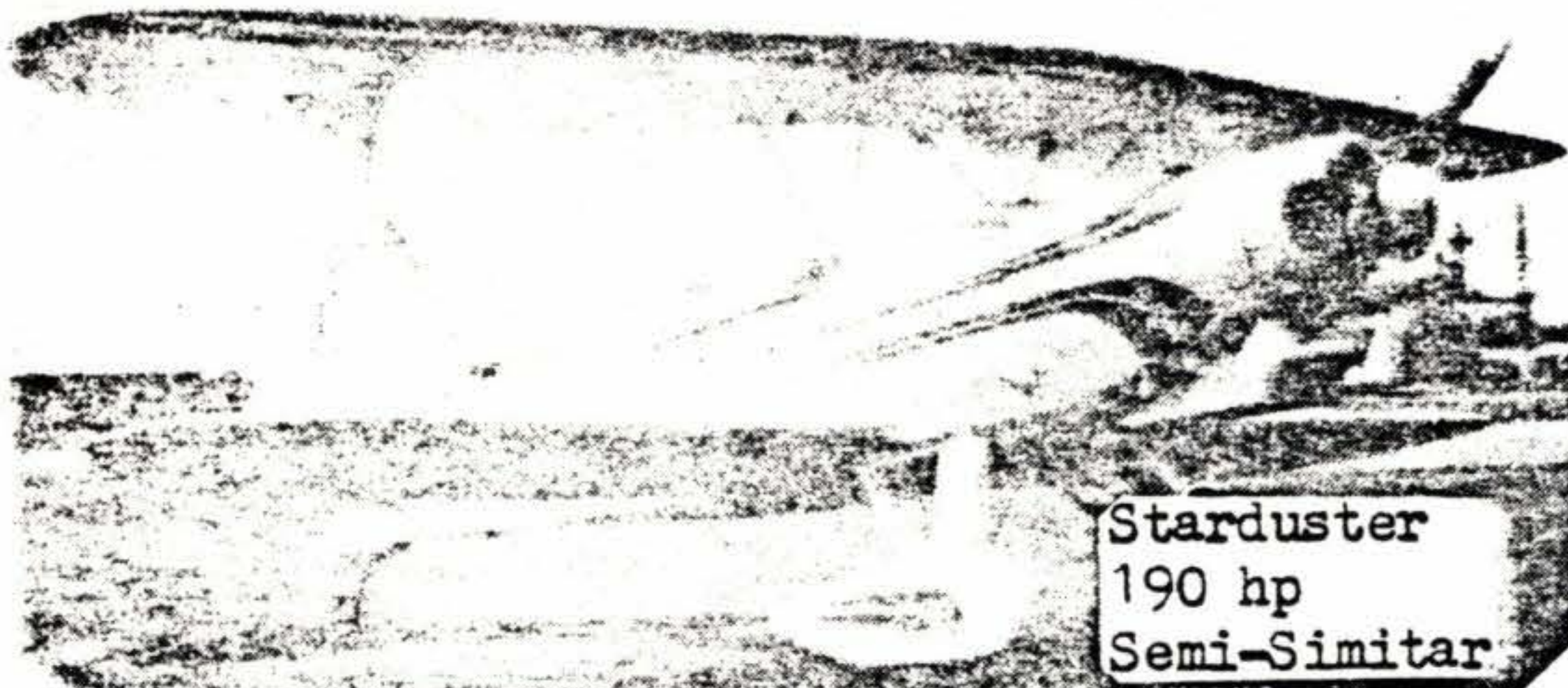
Hummel Bird
P-TIP
Gained 15mph



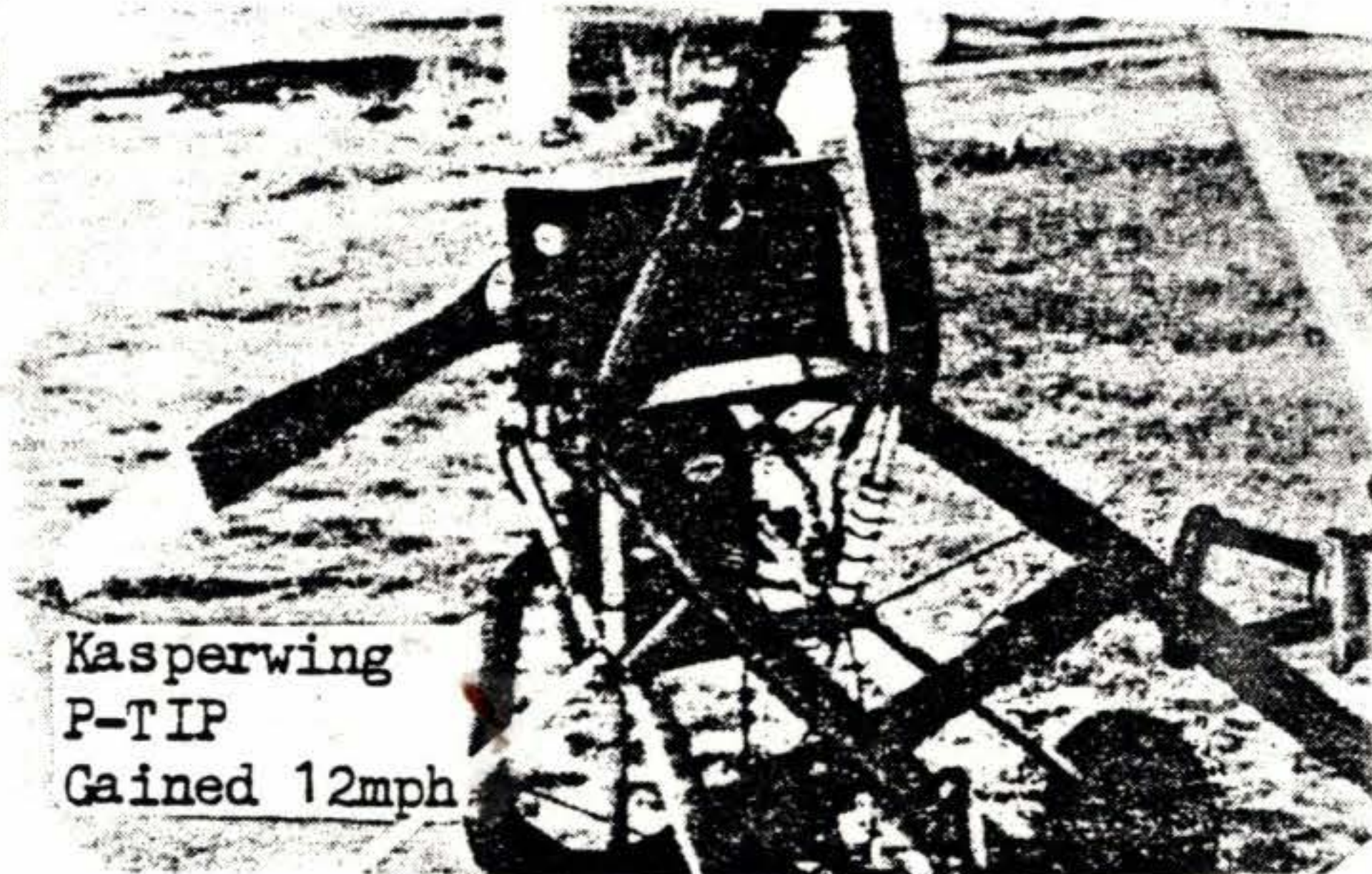
Cassutt
P-TIP
Gained 23mph



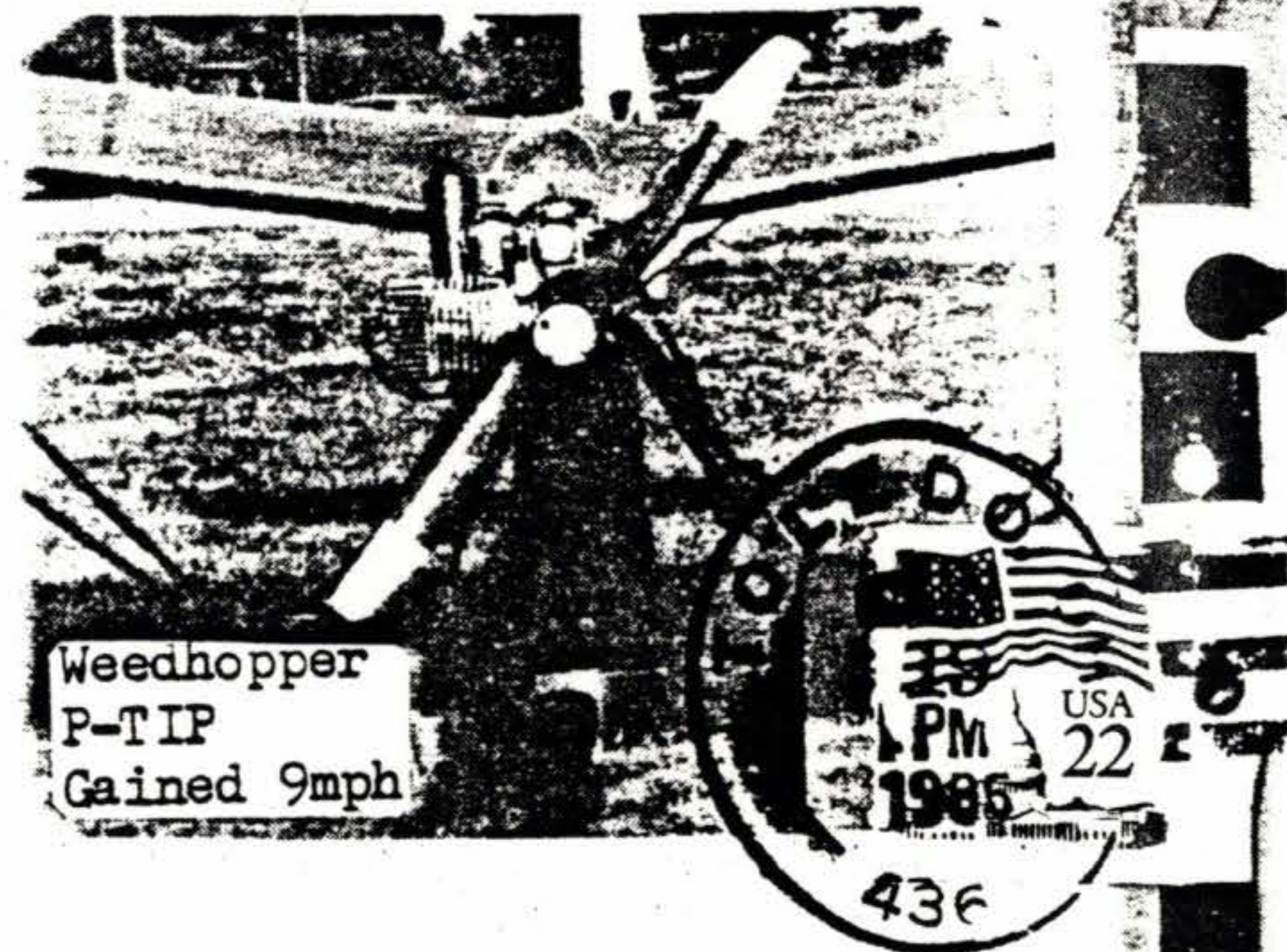
KR-1
Semi-Similar
Gained 6mph



Starduster
190 hp
Semi-Similar



Kasperwing
P-TIP
Gained 12mph



Weedhopper
P-TIP
Gained 9mph

PAC PRINCE AIRCRAFT COMPANY
QUALITY PROPELLERS

P.O. Box 147 - Waterville, Ohio - 43566



DAVID ORR
2523 S. BRUNDY
L.A., CA.
90064

PURCHASE ORDER

Name _____

Street _____

City _____ St. _____ Zip _____

Phone (A/C _____) _____

Type Aircraft _____

Type Engine _____

Size H/P _____

Tractor/Pusher _____

Direction of rotation with wind blowing in your face, clockwise/counter clockwise _____

Diameter requested _____

Pitch Requested _____

Fill in letters that apply to your prop hub.

A _____ E _____

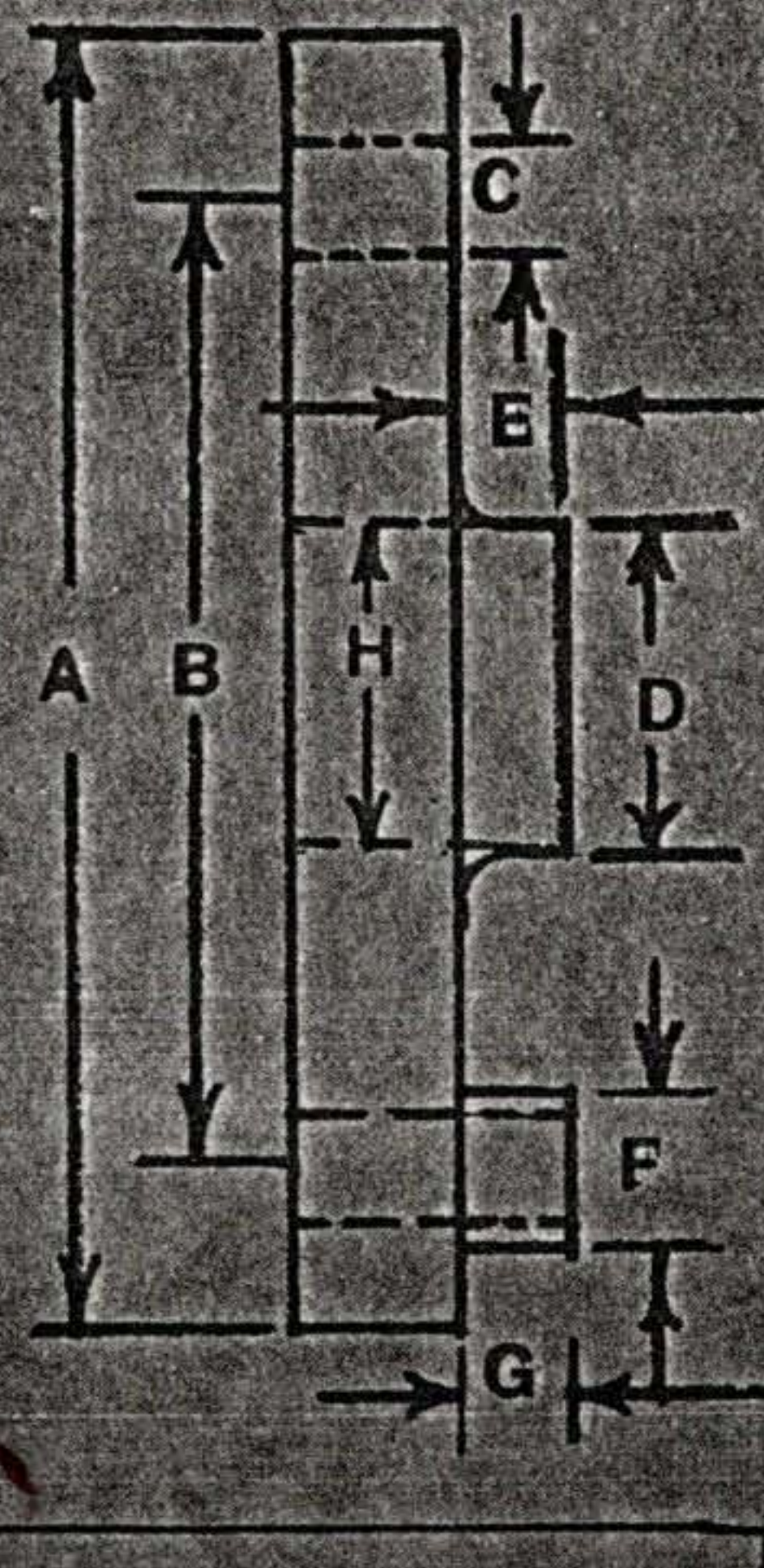
B _____ F _____

C _____ G _____

D _____ H _____

Number of equally spaced mounting holes _____

Additional Instructions: _____



Finished Propeller (see brochure) _____

Partially finished Deduct 15% _____

Profiled Deduct 35% _____

Leading edge protectors (see brochure) _____

Propeller repitch Add \$1.00 per inch of diameter _____

Prince Pitchmeter \$10.00 _____

Ohio Sales Tax if applicable 6% _____

Shipping/Handling \$15.00 _____

Total _____

Amount Enclosed _____

Amount due prior to delivery upon notification from P.A.C. _____

Payment: At least 50% deposit with order. Remainder due prior to delivery. (Deposit non-refundable.)

Shipping/Handling: Add \$15.00. UPS is standard. Foreign or special shipping rates higher.

Delivery Time: Notification upon order placement.

Prince Aircraft Company reserves the right to change cost or materials without notification.

QUALITY PROPELLERS