

## Broken Brock Engine Mount

*George Walters (SC)* - Recently, while repairing a bad left mag I discovered a severely broken engine mount. The Brock mount had 1250 hours on it. The mount was completely broken on the upper left tube, almost completely on

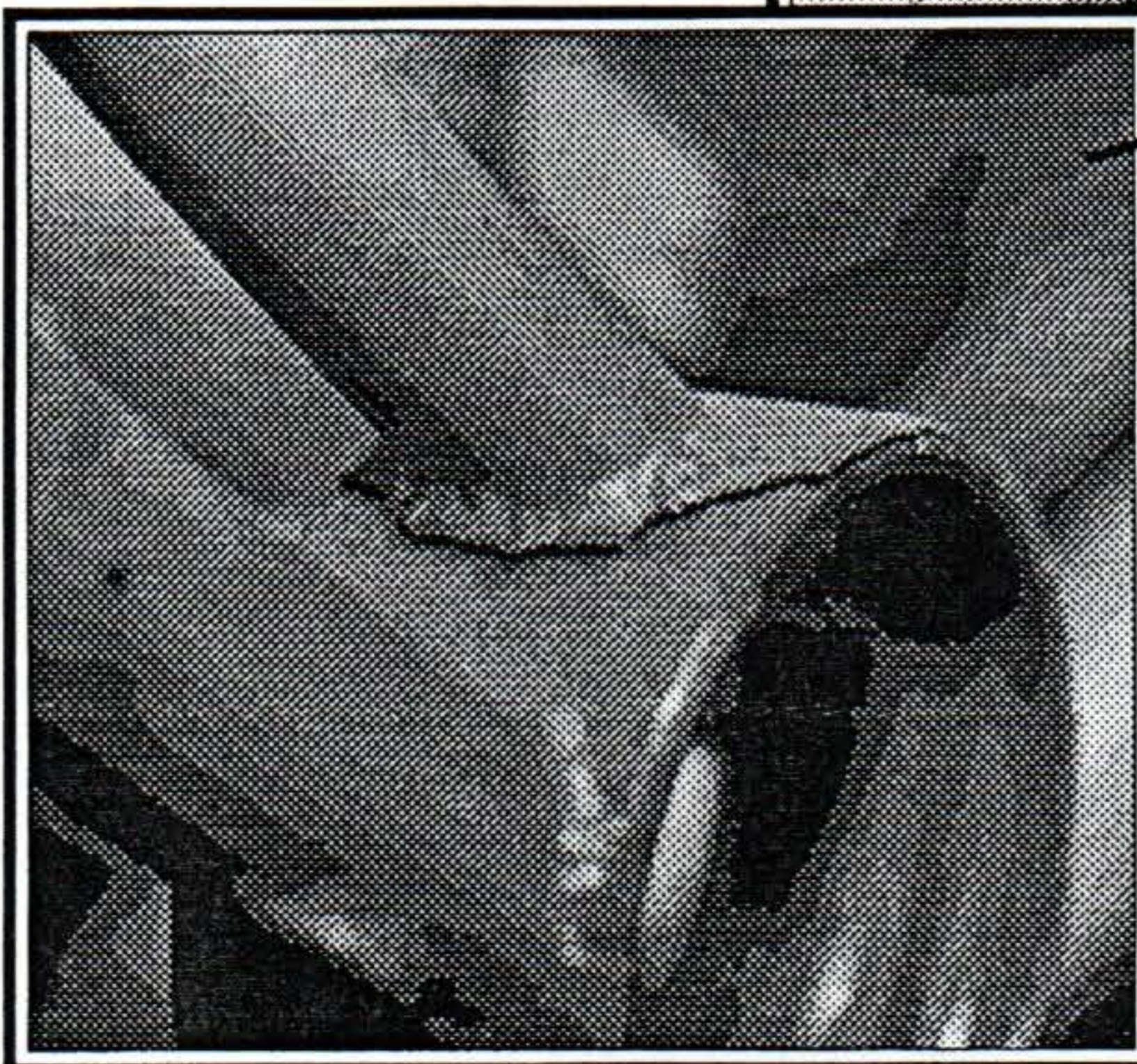
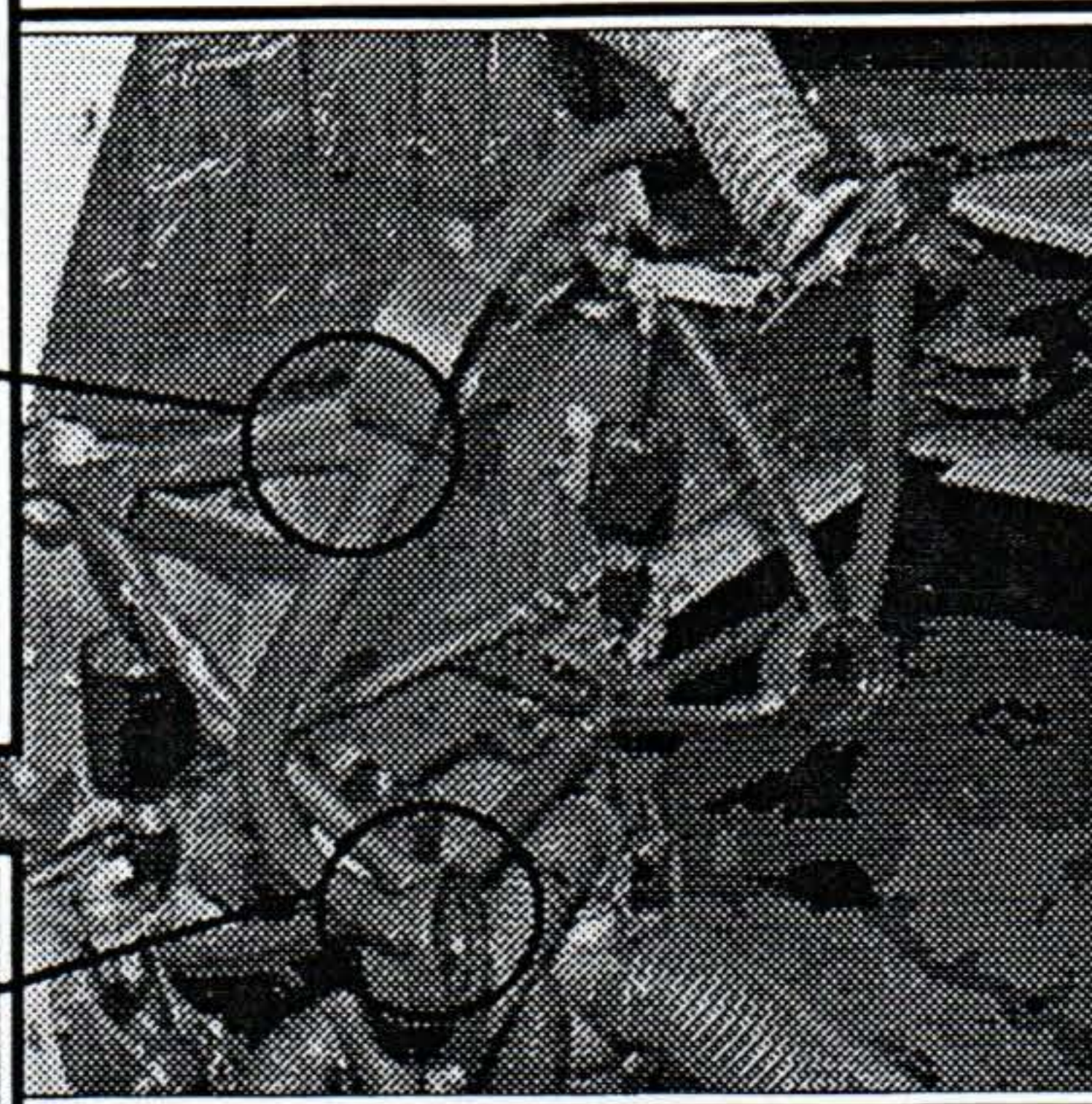
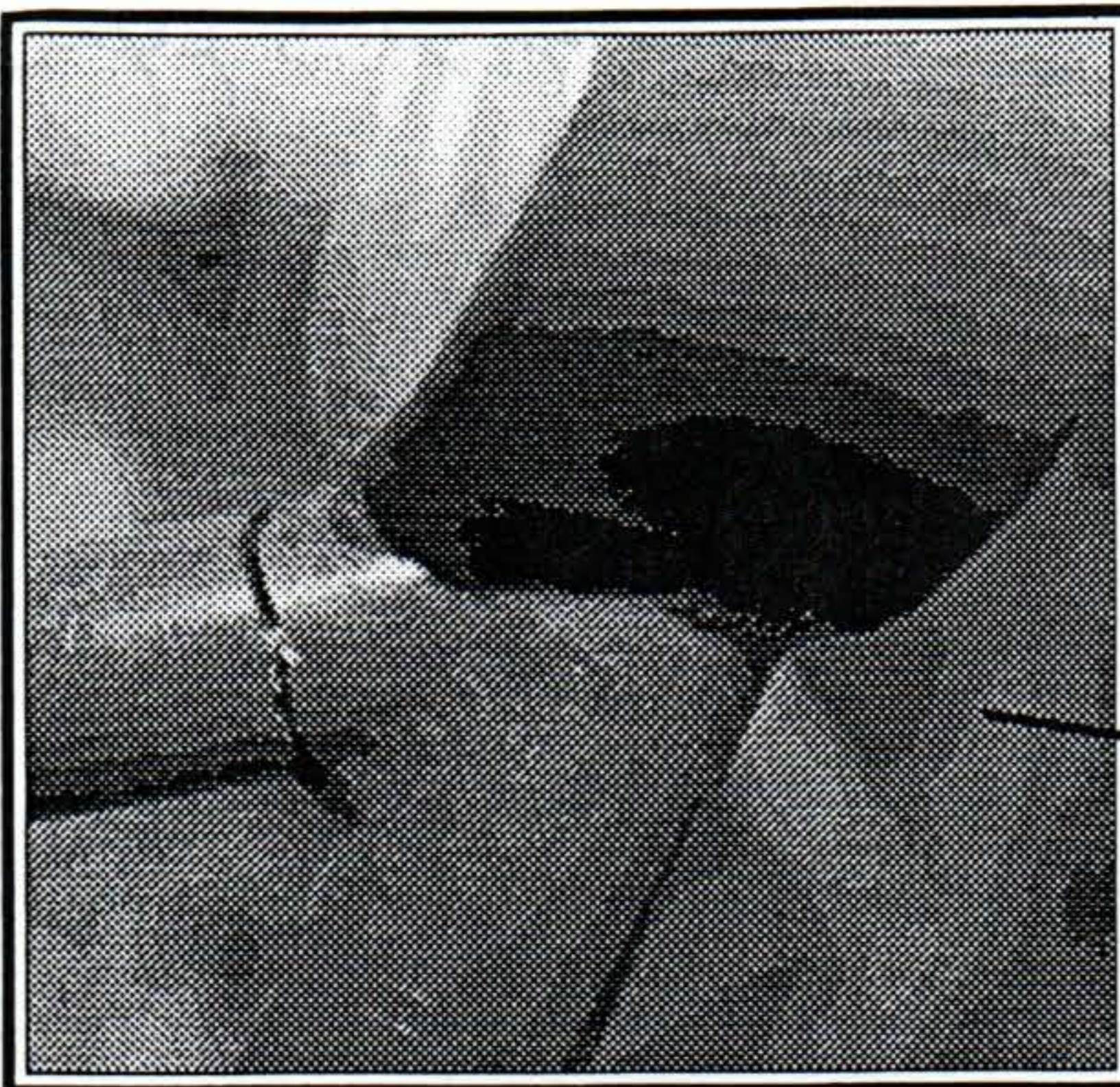
the bottom left tube, and the upper right was cracked in half as well. Very shortly the engine would have left the airplane.

Being aware of another mount failure on Jack Fehling's Eze, I had looked at the mount

two days before during an annual inspection and saw nothing. There was some rust on the upper left crack so it had been cracked for a while.

Obviously, the mount is not strong enough to hold an O-320 with starter and alternator. The airplane has not been subjected to any out of balance propellers or spinners to cause severe vibration. I consider myself lucky to have found this in time.

**Please check yours frequently!**



## EZ Writers

*Bill Theringer - CA* Last summer I stopped at Owensboro, KY airport and was given a guided tour of the "P-38 in the Ice" reconstruction project. The crushed aluminum is carefully removed, heat treated to T-O, re-shaped, then re-annealed to original temper. They have all the original drawings of the plane, courtesy of the Smithsonian.

\*\*\*\*\*

*Bruce & Bonnie Tifft - OR* We were sorry to have missed Oshkosh but got some of Chevron's contaminated fuel and will be overhauling the engine, courtesy of Chevron. I was also having some neck/shoulder medical problems which we're working on getting fixed. We regret the

erroneous rumors that spread around OSH and caused concern, but appreciate all the cards and calls.

\*\*\*\*\*

*Donald & Bernadette Shupe - CA* Your letter, responding to our retiring IVCHC, touched our hearts deeply, it brought joyful tears! We feel very fortunate to have people like you telling us that we made a contribution to some EZers' lives by founding the "Varieze Hospitality Club" and publishing the newsletter.

Since we retired IVCHC, we do not find it appropriate to call on anyone to visit as we travel. However, we will keep your personal invitation in mind should we find ourselves in your neighborhood.

## Long-EZ For Sale

Long-EZ, 160 hours total time. White pearl urethane paint, engine O-235-L2C, 160 SMOH, Ellison, 125 hp pistons, chrome jugs, balanced, Mode C X-ponder, Nav 30 LORAN, Becker comm 720 channel, full panel.

Call: Ken Humphreys  
(816) 453-8020  
Kansas City, MO

*Editor note: I've seen this one; it is really sharp.*

## 3 Cheers!

Johnson County Industrial Avionics (913) 764-2126 in Olathe, KS gave Bill Brin special treatment on a transponder repair.