

Aileron Torque Tube Bearing

Bob Davenport (FL) - Below is a sketch of the Torrington spherical bearing number 6SF10 used on my aileron torque tube assembly for the

Long-EZ. It has worked well and been trouble free for the last 5 years. I've noticed several references to this bearing in recent newsletters and thought others might be interested in

a possible mounting method.

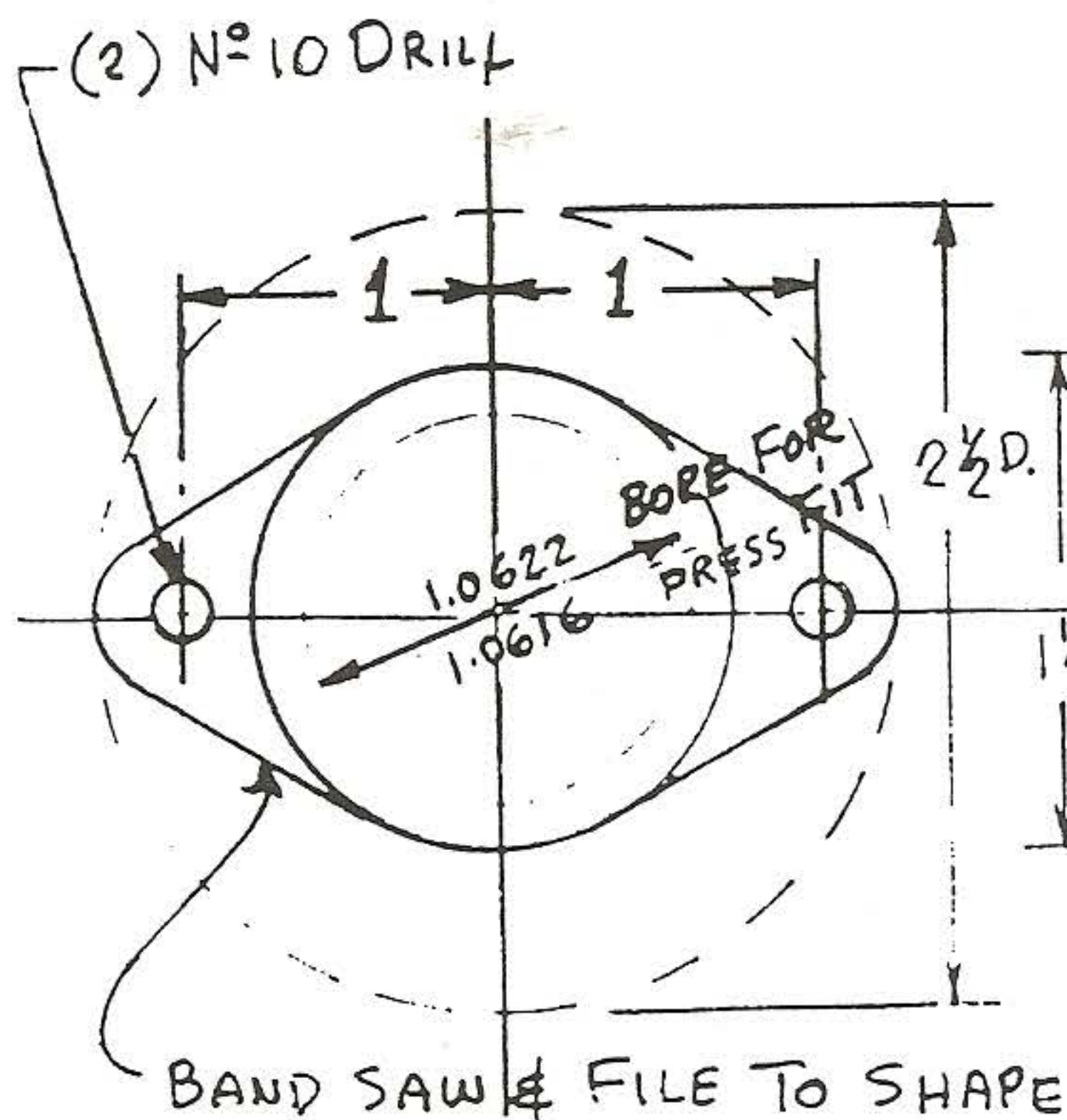
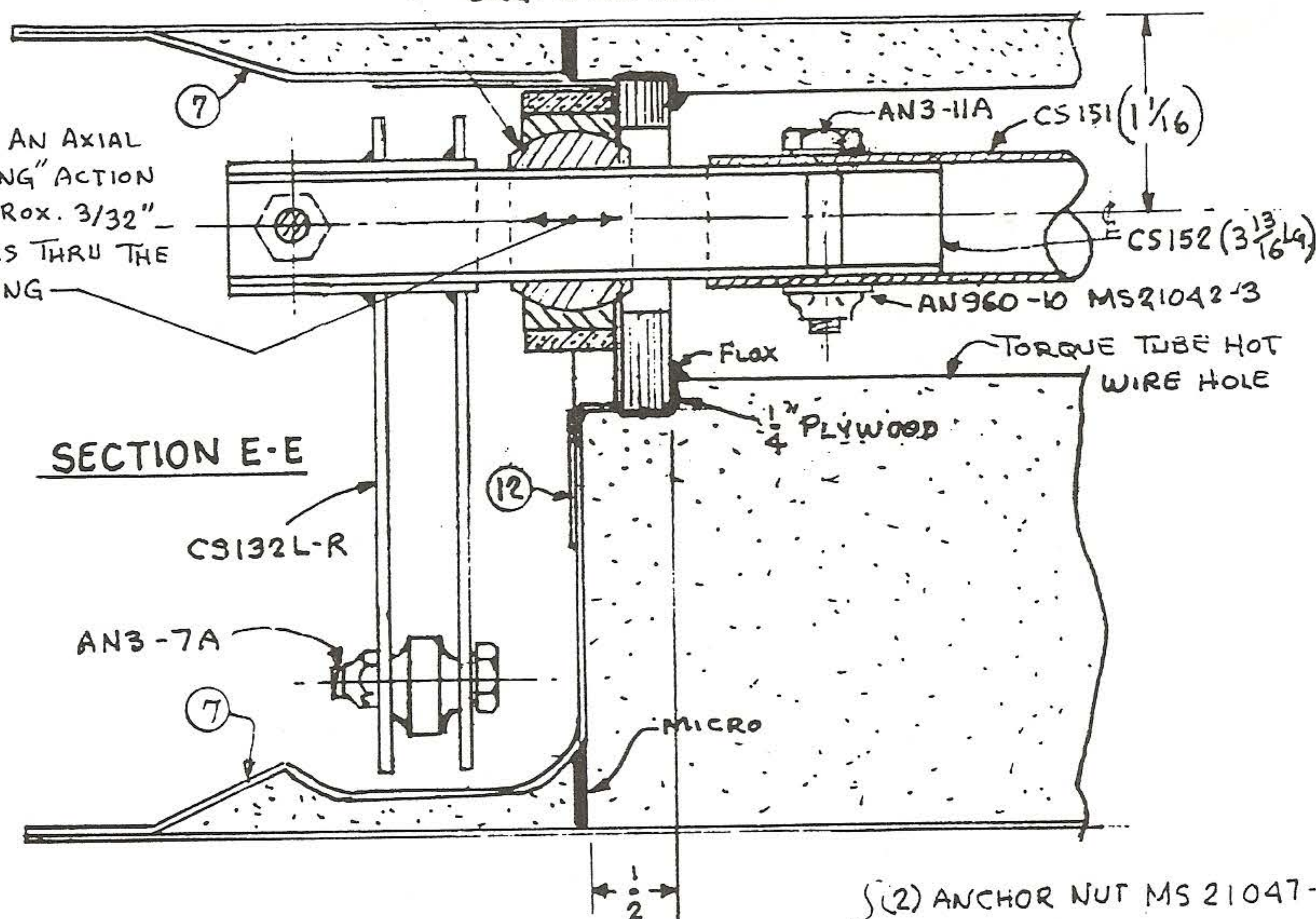
During the 40 hour test period the plane, N282RD was dived to 235 mph IAS at 10,000' to check for flutter.

TORRINGTON SPHERICAL PLAIN BEARING
RADIAL TYPE SF, BRG NO 6SF10
.625 DIA BORE, 1.0625 O.D.

USE DREMEL SANDING DRUM TO INCREASE BORE DIA. IF REQUIRED FOR SLIDING FIT WITH CS152

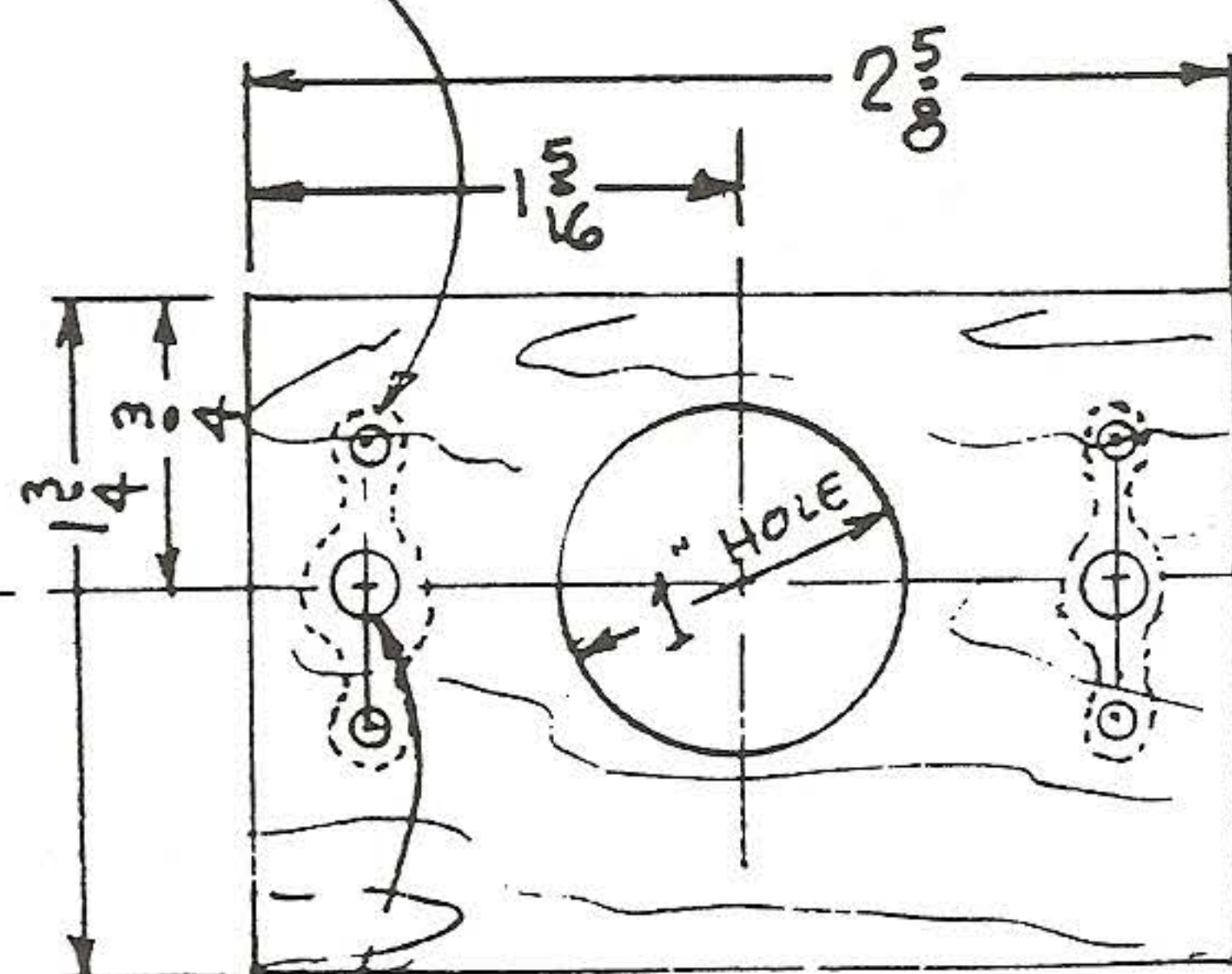
PRESS BEARING INTO BRG. ADAPTOR AS SHOWN

NOTE: AN AXIAL "PUMPING" ACTION OF APPROX. 3/32" OCCURS THRU THE BEARING



BEARING ADAPTOR - 2024-T3 ALUM.

(2) ANCHOR NUT MS 21047-3
(4) RIVET CCR 264 SS 3-4



(2) NO 10 DRILL - LOCATE FROM BEARING ADAPTOR

MOUNTING PLATE - 1/4" AIRCRAFT PLY

Aileron Torque Tube Bearing

Bob Davenport (FL) - Below is a sketch of the Torrington spherical bearing number 6SF10 used on my aileron torque tube assembly for the

Long-EZ. It has worked well and been trouble free for the last 5 years. I've noticed several references to this bearing in recent newsletters and thought others might be interested in

a possible mounting method.

During the 40 hour test period the plane, N282RD was dived to 235 mph IAS at 10,000' to check for flutter.

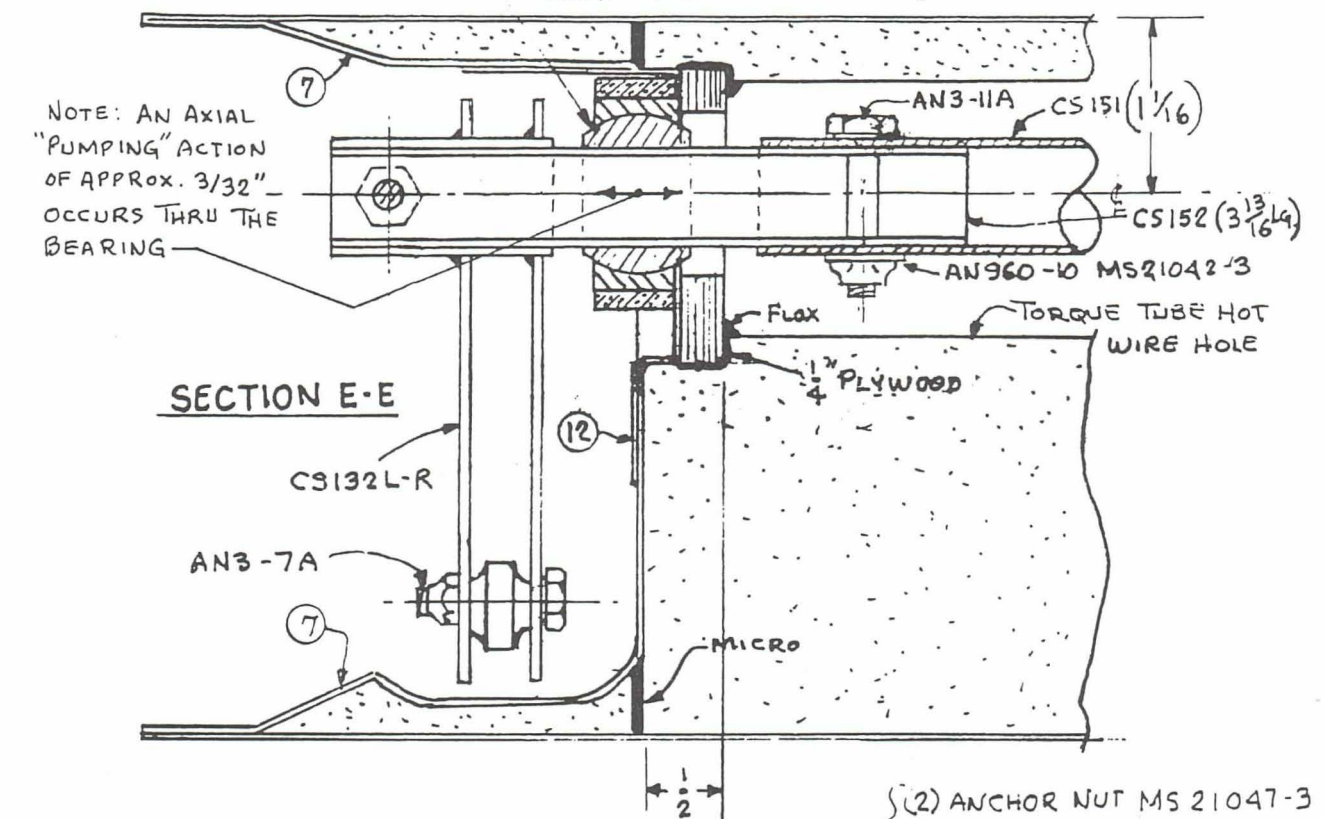
TORRINGTON SPHERICAL PLAIN BEARING
RADIAL TYPE SF, BRG NO 6SF10
.625 DIA BORE, 1.0625 O.D.

USE DREMEL SANDING DRUM TO INCREASE BORE DIA. IF REQUIRED FOR SLIDING FIT WITH CS152

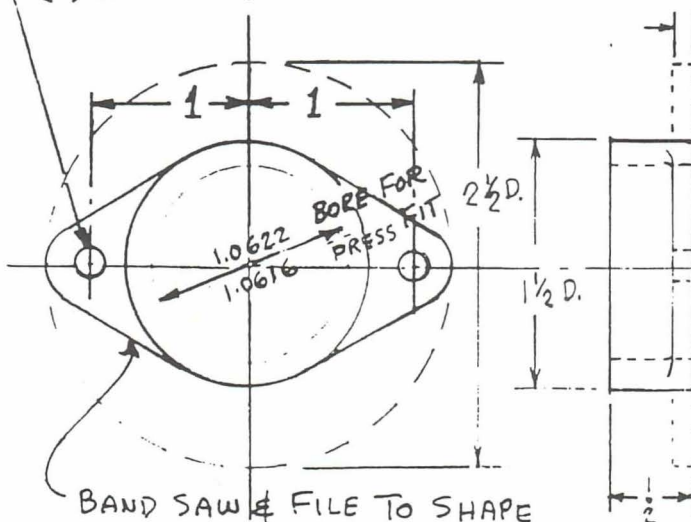
PRESS BEARING INTO BRG. ADAPTOR AS SHOWN

NOTE: AN AXIAL "PUMPING" ACTION OF APPROX. $3/32$ " OCCURS THRU THE BEARING

SECTION E-E

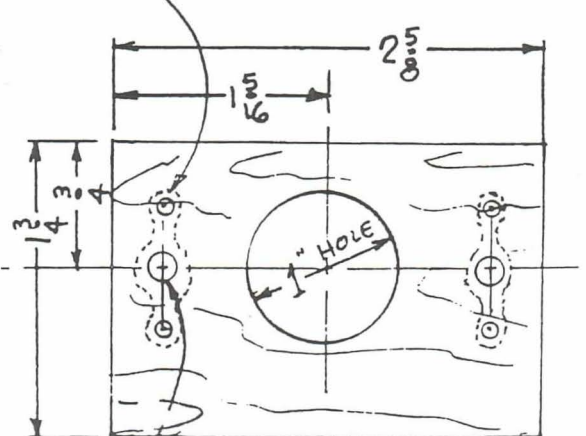


(2) N°10 DRILL



BEARING ADAPTOR - 2024-T3 ALUM.

(2) ANCHOR NUT MS 21047-3
(4) RIVET CCR 264SS 3-4



MOUNTING PLATE - $1/4$ " AIRCRAFT PLY