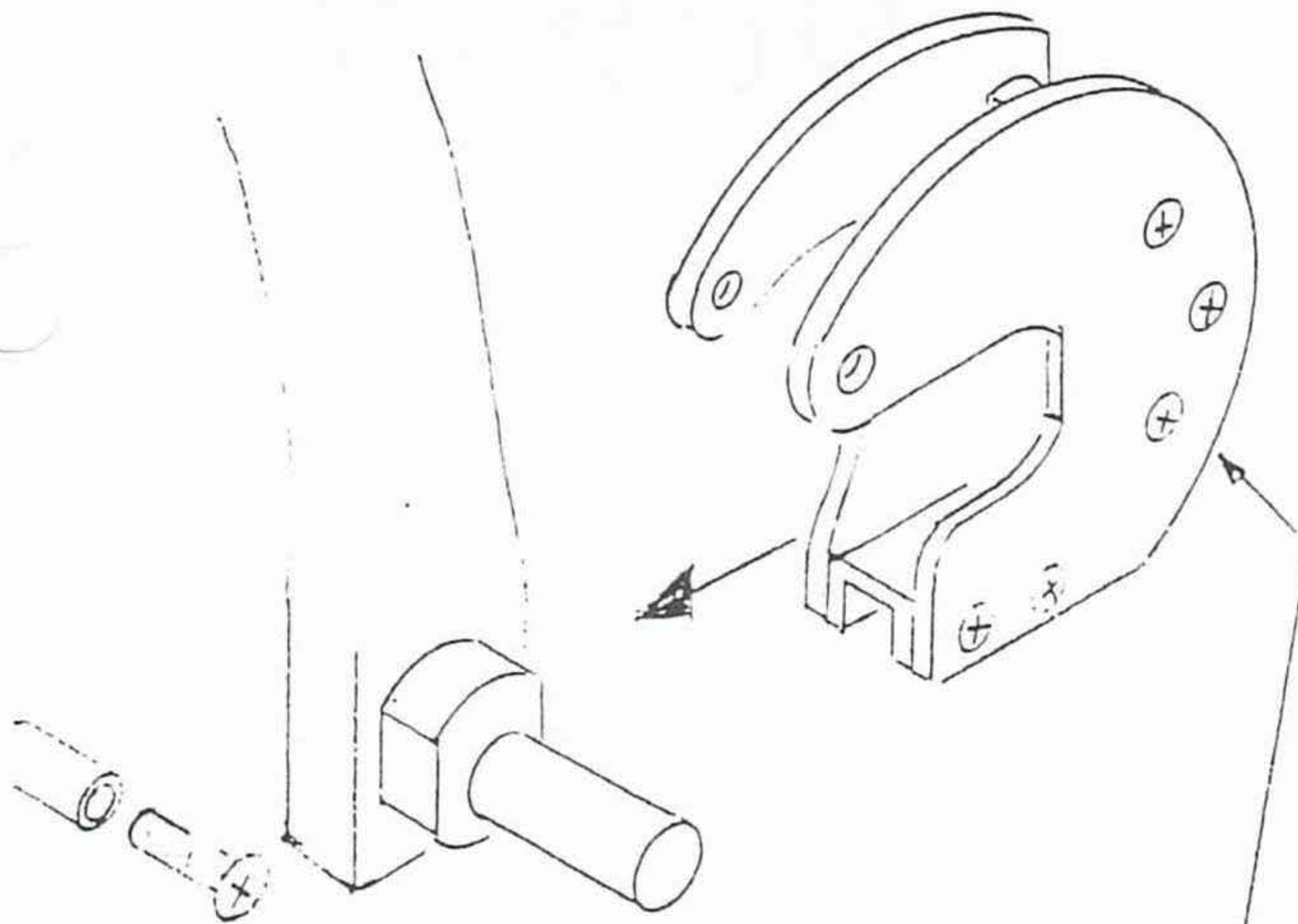


Brake Heat Shield

Ken Merker - (IL) While, looking through back issues I saw strong recommendations to mount heat deflectors between the axle and gear leg. I should have ordered the back issues one week earlier. No sooner had the epoxy between the gear and the axle flanges set and I found out about the deflectors.

I removed the axle bolts but could not get the axles free of the gear strut. So, I built a sleeve type deflector that could be installed without removing the axle. I don't see any problem with it other than being a lot more work and a little

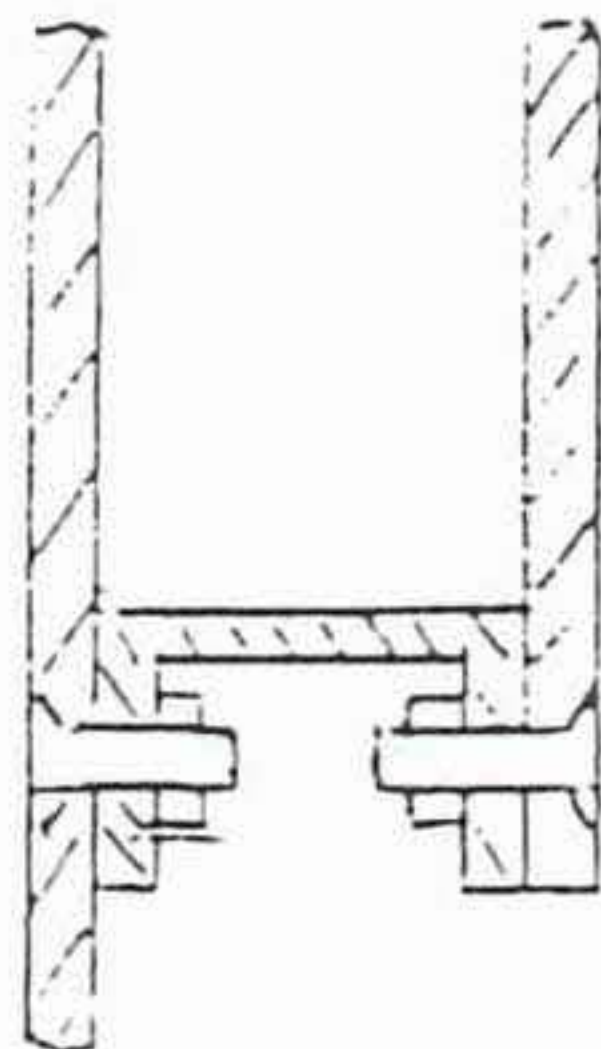
heavier. But then looking at the probability of my airplane laying sideways on a bent gear and me saying, "but it only weighs 1200 pounds, not 1201", it's worth it.



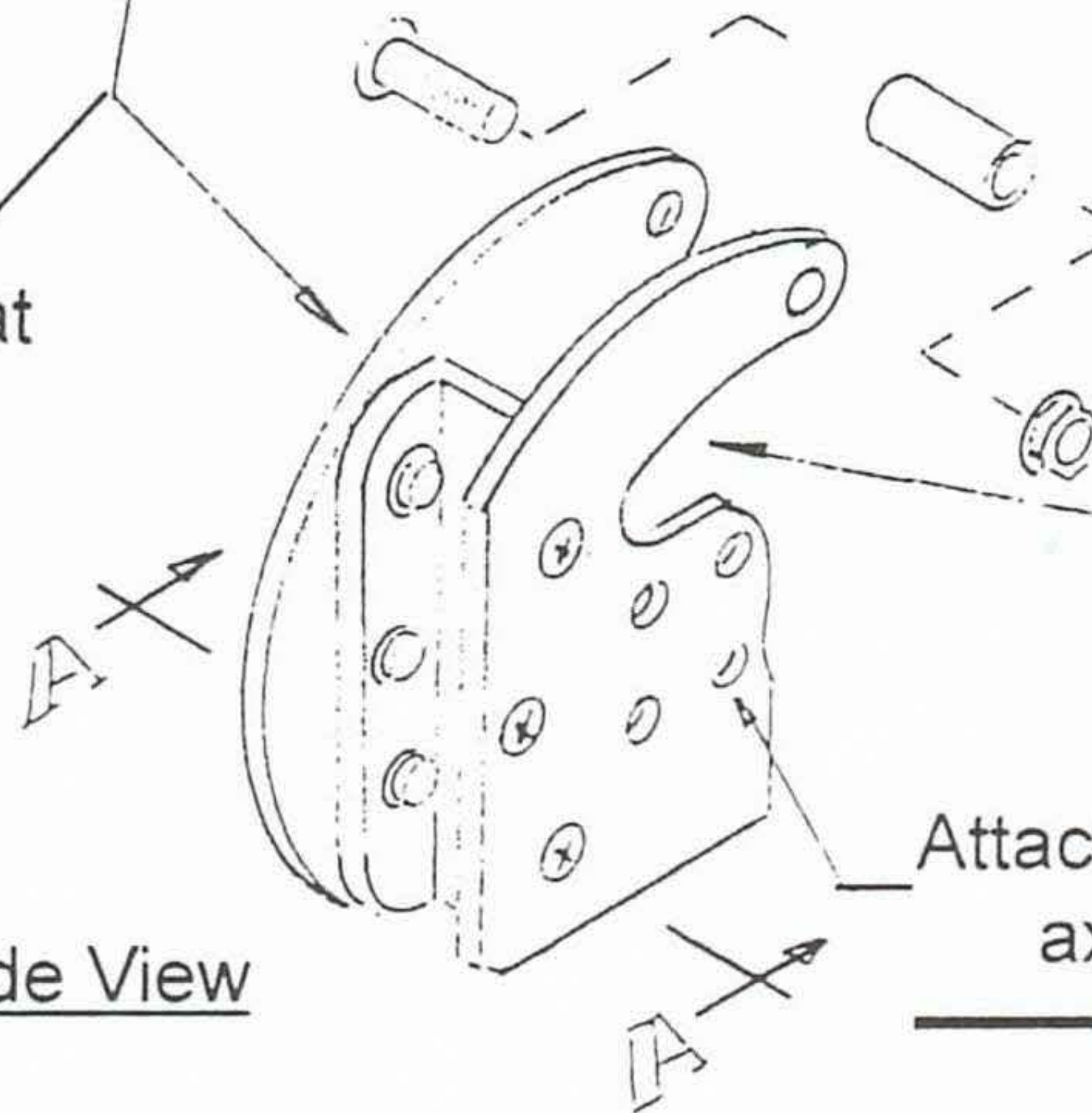
Outside View

.125 thick aluminum heat shield

Section A-A



Inside View



Brake line clearances

Attach to landing gear with axle mounting bolts

Wanted

Vacuum regulator needed. Bruce Hughes - (808) 572-8864, email: