

sion into one 9 pound piece. Of course the whole assembly requires close to zero run-out.

Hopefully, Charlie's plan will be realized and we will see his ingenious direct drive, turbo charged, inter-cooled, exhaust augmented Vari-Eze at OSH. WHEW, what a project! Amazingly enough it is just the prototype for his twin Cozy installation.

Vacuum Bagging Pump Caution

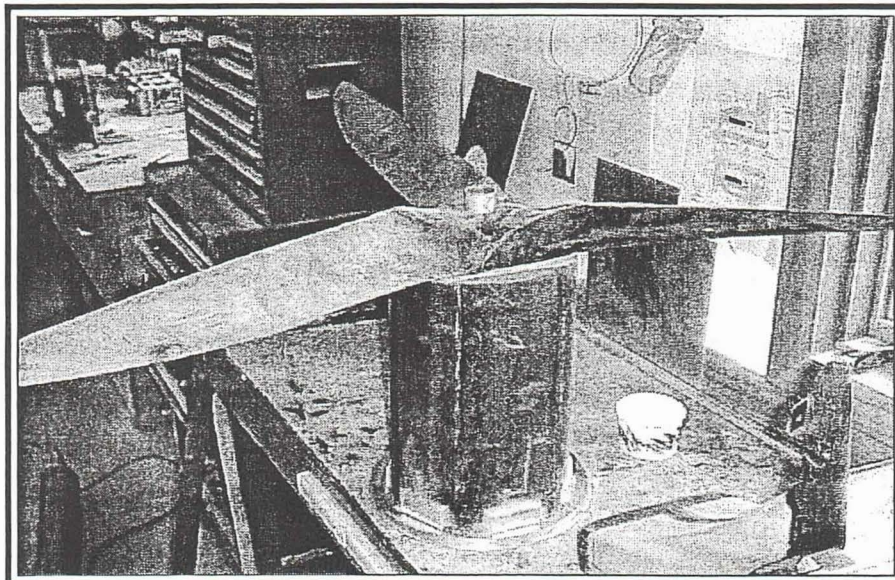
Howard Calk (MD) - Be careful when you choose a vacuum pump. I bought one from Herbach & Rademan for about \$87. It works fine but is an A/C capacitor start motor. This means the motor will not start by just adding on the power. If it does start, it frequently starts in reverse. I rigged up the capacitor to a button. I plug in the power and hit the button and the motor starts properly and in the correct direction.

I later had a part in the vacuum bag curing overnight in my shop. Some time during the night the power was interrupted. When I got to the shop the next day, the motor had not started properly and was smoking! The part in the bag turned out OK and the vacuum pump motor survived but I never again left that pump unattended.

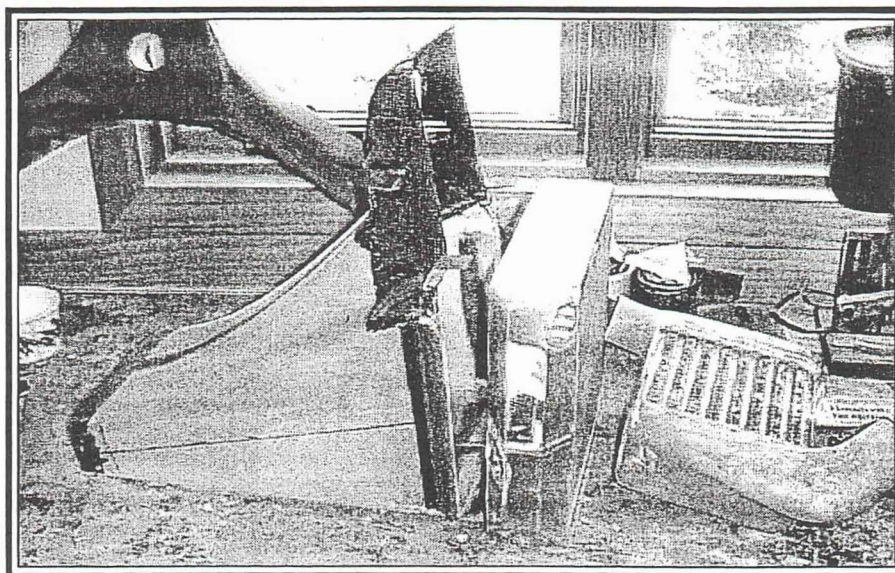
Eze Bookends

Wayne Johnson (WA) If you never made the book ends that Burt suggested you make as a practice layup project, here is your chance to get a pair with some air time and miles on them! Mine are the old lower winglets. Ten years ago, I cut off the original lower winglets and made new Long-EZ style ones. They added low speed approach stability, better view over the nose on landing, etc.

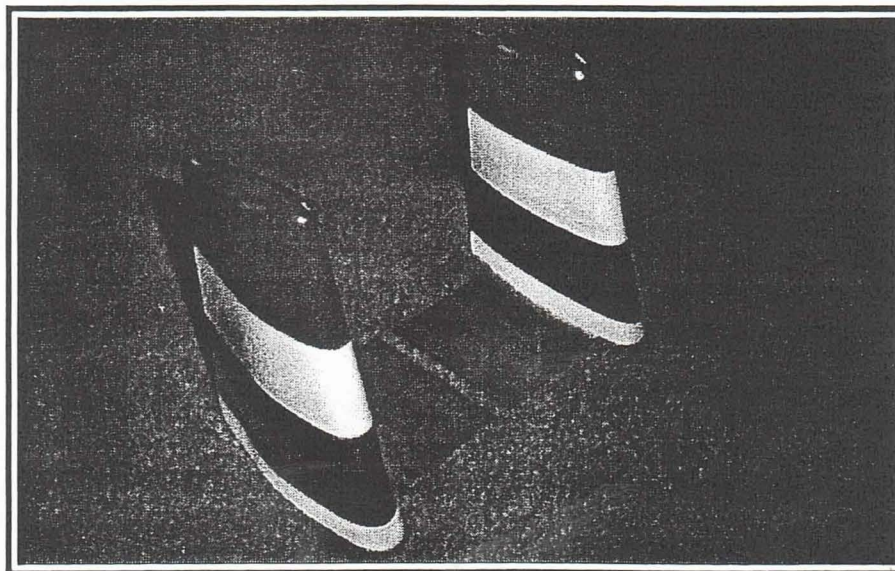
After cutting them off, I added a 90-degree bracket out of sheet metal that was microed or floxed into a slot in the bare foam and then glassed over the foam with BID. You have instant bookends that you can have at home to remind you of those great days you have had flying your Eze!



Combination prop, flywheel and prop extension



NACA diffuser duct to radiator and inter cooler



sion into one 9 pound piece. Of course the whole assembly requires close to zero run-out.

Hopefully, Charlie's plan will be realized and we will see his ingenious direct drive, turbo charged, inter-cooled, exhaust augmented Vari-Eze at OSH. WHEW, what a project! Amazingly enough it is just the prototype for his twin Cozy installation.

Vacuum Bagging Pump Caution

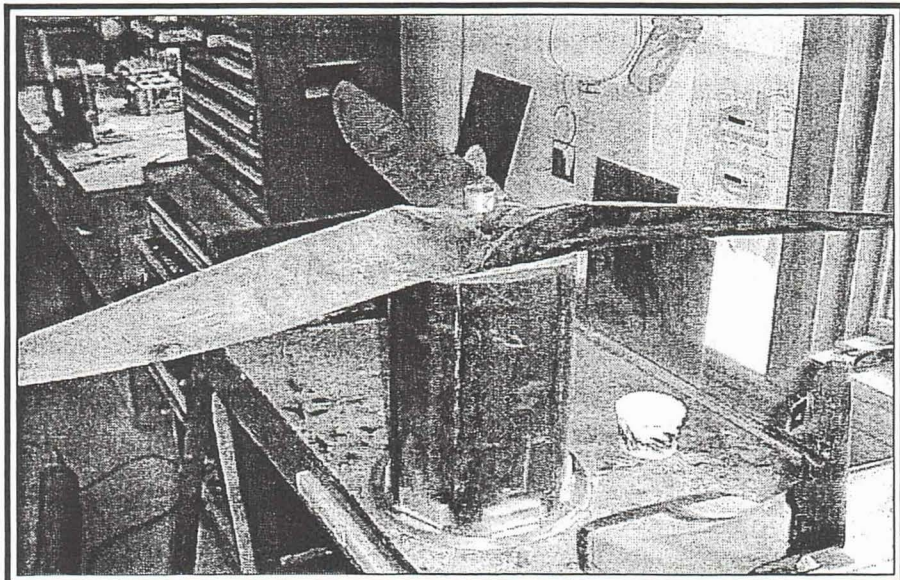
Howard Calk (MD) - Be careful when you choose a vacuum pump. I bought one from Herbach & Rademan for about \$87. It works fine but is an A/C capacitor start motor. This means the motor will not start by just adding on the power. If it does start, it frequently starts in reverse. I rigged up the capacitor to a button. I plug in the power and hit the button and the motor starts properly and in the correct direction.

I later had a part in the vacuum bag curing overnight in my shop. Some time during the night the power was interrupted. When I got to the shop the next day, the motor had not started properly and was smoking! The part in the bag turned out OK and the vacuum pump motor survived but I never again left that pump unattended.

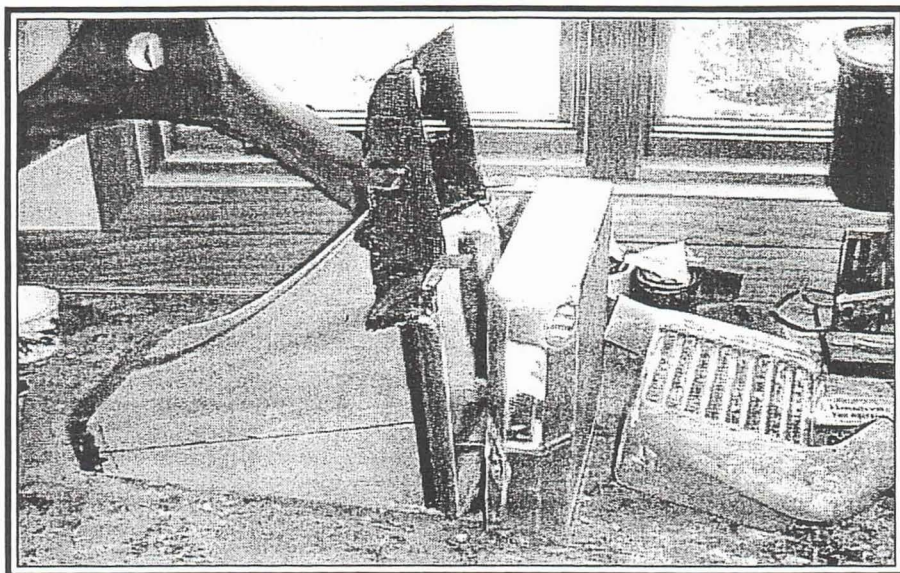
Eze Bookends

Wayne Johnson (WA) If you never made the book ends that Burt suggested you make as a practice layup project, here is your chance to get a pair with some air time and miles on them! Mine are the old lower winglets. Ten years ago, I cut off the original lower winglets and made new Long-EZ style ones. They added low speed approach stability, better view over the nose on landing, etc.

After cutting them off, I added a 90-degree bracket out of sheet metal that was microed or floxed into a slot in the bare foam and then glassed over the foam with BID. You have instant bookends that you can have at home to remind you of those great days you have had flying your Eze!



Combination prop, flywheel and prop extension



NACA diffuser duct to radiator and inter cooler

