

Herb Sanders - Long-EZ

Herb Sander (TN) - I am pleased with what I see on the inside and out side of the wheel pants and cuffs. The flow seems attached tip to tip.

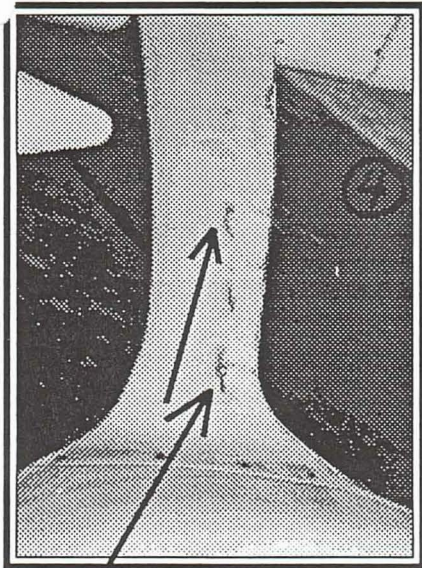
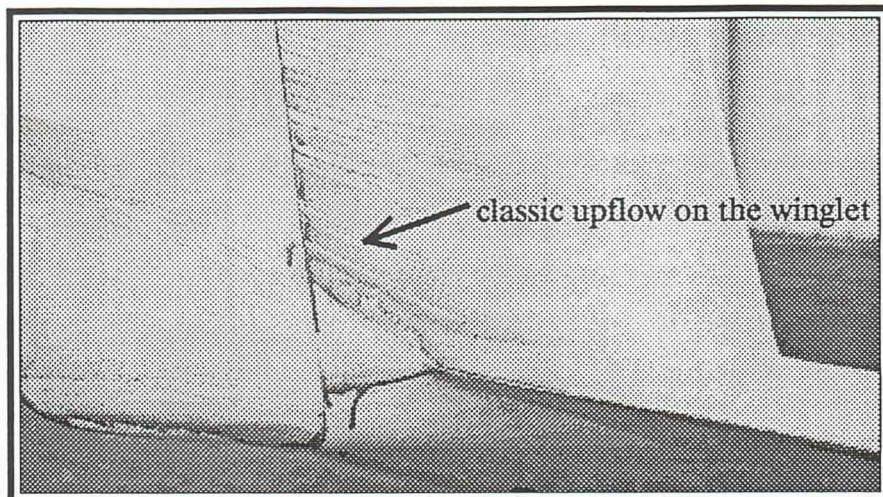
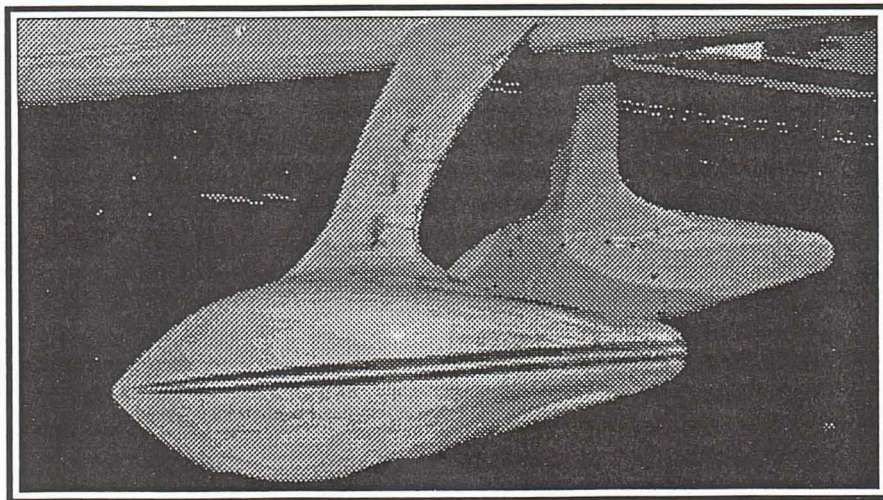
I was a little disappointed in the gear legs as the flow seemed to separate at about 60% of the chord.

Everyone has this problem at the wing/winglet junction. Maybe a vortex generator would help fill this.

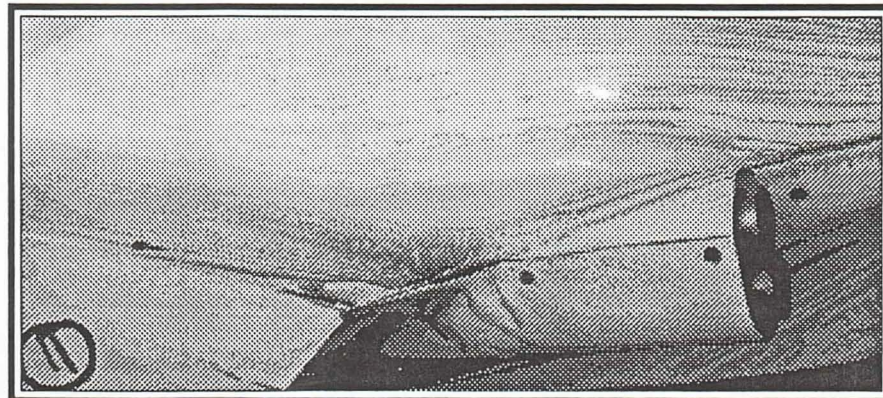
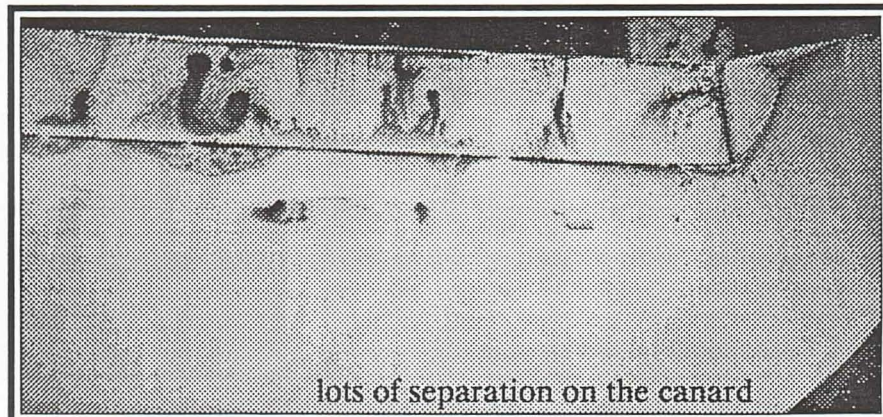
The top of canard and elevators need help. I hope to have the little flush inlet shapes on the canard before winter. Note how nicely the sheared tips perform! Top and bottom appear to be attached and flowing straight out to the tip.

I would not use the fuselage side pitot tube location again as it is not too accurate and causes too much drag.

Here is the mess. We need to get those exhaust tubes inside the main cowl outlet and get rid of the fairings.



airflow separates about at 60% of the chord



Wow! All that yucky oil on beautiful airplanes.
Thanks Herb, Gary,
Jim, Bob and Carl